



DLSU TEAM OFFERS COVID-19 MENTAL HEALTH RESPONSE STRATEGIES FOR LGUs

IN THE FACE OF RISING MENTAL HEALTH ISSUES AMID THE COVID-19 PANDEMIC, a team of De La Salle University faculty and student researchers from the Psychology Department crafted recommendations in establishing an effective mental health response strategy among local government units (LGUs).

Full story on Page 2 >

What's inside

Study seeks to support local MSMEs towards entrepreneurial venture growth	2
ME professor receives NRCP Award	3
Promoting research to improve Science education	4
Integrated Electron Microscopy Laboratory	5

The policy brief, which appears on La Salle Institute of Governance's [WEBSITE](#), was authored by Associate Professor Dr. Homer Yabut, Social Development Research Center Research Associate Lyka Mae Lucena, and MS Psychology students Sahara Iman Alonto, Marie Clarisse Quitain, and Gissel Caseres.

In the paper, the team notes that as COVID-19 cases increased in recent months, mental health issues across Southeast Asia grew as well. In the Philippines, national government agencies and LGUs as well as private organizations initiated multiple actions to address the issue.

Recommendations include the use of Mental Health and Psychosocial Support Approach in emergency setting, psychological first aid, and telepsychology.

The paper offers key strategies, which include the need for LGUs to lead a comprehensive mental health program, in collaboration with stakeholders like the academe, church, mental health professionals, and Department of Health. This also involves community, family, and individual support.

Another strategy is to create awareness and to undertake capacity-building at the barangay level. An example is for barangay health workers to include mental health screening and monitoring of quarantined individuals.

Likewise, the paper recommends the development of community-led mental health awareness campaigns using social media, the strengthening of telepsychology mental health services, and the creation of local ordinances that include anti-discrimination and anti-stigma against frontliners and COVID-19 patients.



Study seeks to support local MSMEs towards entrepreneurial venture growth

ENTREPRENEURIAL VENTURE GROWTH INVOLVES SUSTAINING ENTREPRENEURS' INCOME, EMPLOYMENT GENERATION, AND VALUE-ADDING PRODUCTS AND SERVICES. It likewise highlights the need to meet production capacity as well as the need to help enterprises produce, innovate, and gain market access.

This is underscored in a study titled, "Determinants of entrepreneurial venture growth in the Philippines using the Global Entrepreneurship Monitor" conducted by Dr. Brian Gozun (+) of De La Salle University and Dr. John Paolo Rivera of the Asian Institute of Management, supported by the DLSU Angelo King Institute for Economic and Business Studies.

The study notes three key implications from the interplay of entrepreneur's demographics, firm attributes, and entrepreneurial strategies (market expansion and external participation) in driving entrepreneurial venture growth.

One of these is for businesses to have international and export orientation. The study suggests that enterprises possessing niche specializations and technologies can be suppliers of raw materials and/or work-in-progress to larger enterprises who have both economies of scale and scope, and access to global value chains.

Alternatively, enterprises can also develop their own global value chain by outsourcing from foreign suppliers and taking advantage of competitive costs and greater flexibility. Market expansion highlights the need to innovate, find new markets, adopt new technologies, and engage in an appropriate degree of competition.

The study also implies that demographics moderate entrepreneurial strategies and that government plays a critical role in ensuring that regulatory, administrative, and policy environments do not inhibit access to global markets. Government can provide MSMEs technical assistance towards building linkages; programs for training, capacity-building, and mentoring; and financial support for activities such as trade fairs.

ME professor receives NRCP Award

MECHANICAL ENGINEERING DEPARTMENT FULL PROFESSOR AND RESEARCH FELLOW DR. ARISTOTLE UBANDO was recently named as recipient of the 2020 National Research Council of the Philippines (NRCP) Achievement Award.

The NRCP Achievement Award is given to members of the Council for their outstanding achievements in research, active membership, and significant contributions to the growth and development of their field.

Ubando is the head of the Thermomechanical Analysis Laboratory at DLSU Laguna Campus. His research includes finite element analysis, computational fluid dynamics, process integration and optimization, and energy system modelling.

The awarding will be held during the annual Scientific Conference and the 88th General Assembly of NRCP on March 10.



Ubando

Philosophy Department faculty member receives diversity grant

PHILOSOPHY DEPARTMENT ASSOCIATE PROFESSOR AND CONCURRENT VICE-PRESIDENT OF THE PHILOSOPHICAL ASSOCIATION OF THE PHILIPPINES DR. HAZEL BIANA recently received a Diversity Grant from *Hypatia*, one of the leading feminist philosophy journals in the world.

Biana's project "The 'Gender Turn' in Philosophical Discourses in the Philippines" –one of only three chosen from an extremely competitive pool of applicants–will be housed under the De La Salle University-Southeast Asia Research Center and Hub (DLSU-SEARCH).

Hypatia publishes cutting-edge work that broadens and refines feminist philosophy. One of its advocacies is to promote diversity within feminism itself: to promote the diverse experiences and situations of women and the diverse forms that gender takes across the globe.

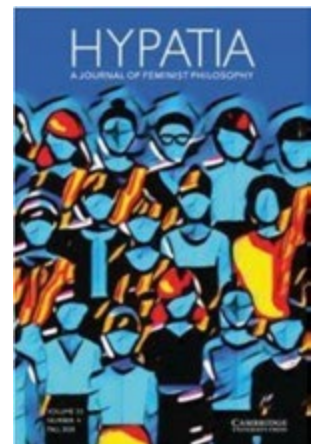
Towards this end, it awards a Diversity Grant every year to support projects that serve underrepresented groups in philosophy and promote the gender diversity within the discipline.

Biana has been teaching philosophy and gender studies courses in DLSU for more than a decade now. Her Diversity Grant project aims to highlight the diversity of gender-related discourses in the Philippines by documenting the works of Gender Studies and Feminist Philosophy trailblazers in the country.

Her hope is that this project will pave the way for the mainstreaming and promotion of the "othered" philosophical discourses in the Philippines.



Biana





Promoting research to improve Science Education

**SCIENCE EDUCATION
 DEPARTMENT
 FULL PROFESSOR
 DR. MARICAR PRUDENTE**

**PLAYS AN ACTIVE ROLE IN PROMOTING
 RESEARCH FOR NATIONAL DEVELOPMENT.**

Prudente

She believes that national policies should be based on science and has devoted a career to producing hundreds of research that show why.

This Lifetime Achievement Awardee in Research, recognized by the National Research Council of the Philippines in 2015, asserts that the academe contributes not just to knowledge-making, but also how new knowledge can be used to improve human life and society.

Her science-based approach is anchored on expertise in several fields of study, stemming from degrees in Physics and Biology and a PhD specializing in Environmental Chemistry and Ecotoxicology.

Her Google Scholar Profile boasts a total citation of 4,542 and an h index of 32, meaning each of her publications has been cited at least 32 times. This is a testament to her productivity as well as to the relevance of her research subjects.

Prudente’s collaborative work on highly relevant topics, such as detecting common plastic additives in human breast milk or integrating Physics in Disaster Risk Reduction through YouTube videos, have earned the recognition of the Department of Science and Technology and Japan

Society for the Promotion of Science (JPSP). In 2018, they named her “Outstanding Filipino JSPS Fellow in the field of Education.”

Having spent over two decades as a faculty member in DLSU, she identifies foremost as a Lasallian researcher, adhering to the core values espoused by St. John Baptist de La Salle.

“Understanding how to improve the quality of Science teaching and learning inspires me to do research nowadays. I find joy in working collaboratively with fellow science educators and graduate students in developing innovative, relevant, meaningful, and effective instructional practices,” she shares.

Indeed, a number of her studies focus on improving pedagogy, particularly in STEM, from evaluating the “Effects of Technology-Integrated Brain-Friendly Teaching on Retention and Understanding in Photosynthesis and Cellular Respiration” to “Using Lesson Playlist through Schoology-Based Flipping the Classroom (FTC) approach in Enhancing STEM Students’ Performance in General Biology 1” and “Preventing Homework Copying Through Online Homework in a Math Class.”

Prudente’s research has helped teachers around the world to use science in improving educational outcomes, proving that the power of science can change classrooms everywhere. As she forges on to promote science through her work, she hopes to convince that it can effect change in society as well.

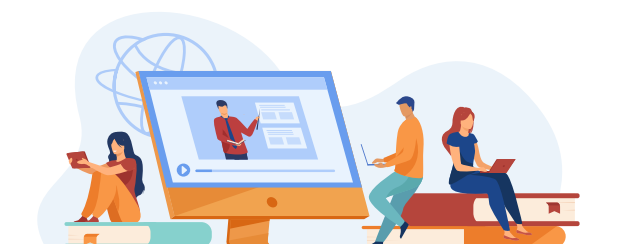
Democratic Discourse in the Time of the Pandemic

THE DE LA SALLE UNIVERSITY-SOUTHEAST ASIA RESEARCH CENTER AND HUB (DLSU-SEARCH) is inviting everyone to join the Democracy Discourse Series (DDS) online forum on February 26, 2021, 9 am -12:30 pm.

With the theme, “Democratic Discourse in the Time of the Pandemic,” the forum will showcase projects undertaken by public intellectuals from the Philippines and Malaysia as they promote the values of openness, tolerance, deliberation, and diversity through the arts, popular culture, theater, and everyday life practices.

Eminent Malaysian economist and democracy advocate, Jomo Kwame Sundaram, will provide the keynote address. Professor Jomo’s talk will be followed by a discussion on the challenges confronting regional polities.

Attendees will receive the link to the forum upon completion of the form listed below: https://docs.google.com/forms/d/e/1FAIpQLSdEIl6GFdnMQ-z-T2GcPAGGIM5Df7a0qhcLYNsxw1_qoxl8xw/viewform?usp=pp_url.





DLSU LAGUNA CAMPUS UPDATES

Integrated Electron Microscopy Laboratory

THE CENTRAL INSTRUMENTATION FACILITY (CIF) UNDER THE OFFICE OF THE VICE CHANCELLOR FOR RESEARCH AND INNOVATION recently completed the installation of the Integrated Electron Microscopy (IEM) Laboratory located at the George S.K. Ty Building on DLSU Laguna Campus.

The laboratory is a semi clean room accessible by an air shower to maintain a clean environment with anti-static flooring for working with electro-static sensitive devices.

It houses the Transmission Electron Microscope (TEM), Scanning Electron Microscope (SEM), and Focused Ion Beam (FIB). The 200kV TEM is capable of analyzing structures with a resolution of 0.15nm or a magnification of X1,000,000, making it one of the most powerful electron microscopes in the country.

It has a dedicated sample preparation area to fabricate thin film (lamella) samples either using a microtome or a combination of focused ion beam and micromanipulator.

The laboratory will enable researchers to identify material structures, analyze microscopic biological samples, material elemental composition, and structure measurements.

It has a wide range of applications for science and engineering that require ultra high magnification imaging. The lab offers services for external researchers from academe and industry in their failure analysis requirements.

For more information, please contact cif@dlsu.edu.ph.

New DLSU scholars



LAST FEBRUARY 3, DE LA SALLE UNIVERSITY WELCOMED 33 NEW SCHOLARS TO ITS FOUR FLAGSHIP SCHOLARSHIP PROGRAMS in an online event organized by the Office for Strategic Communications in partnership with the Office of Admissions and Scholarships.

This year, 12 Star Scholars, seven Vaugirard Scholars, one Gokongwei Scholar, and 13 Archer Achievers joined the roster of DLSU's best and brightest students. These students are the top examinees of last year's DLSU College Admissions Test.

With the theme, Pusong Lasalyano, the event highlighted the identity and the strengths of the Lasallian community as its members continue to respond to the challenges of the times and to be active participants in shaping the new normal.

During the event, Star Scholar Francine Chan (BS Psychology and BS in Applied Corporate Management, 2020, summa cum laude) also shared her scholar journey and how the scholarship program helped her survive the challenges in her college life.

“Be convinced that God is ready to refuse you nothing that you ask of him with faith and confidence in his goodness.”

De La Salle

Med 38.2

De La Salle University in Webometrics 2021

The Webometrics Ranking, released twice a year during the weeks of January and July, monitors more than 31,000 higher education institutions (HEIs) worldwide. It measures web performance with the following indicators: presence, visibility, transparency (or openness), and excellence (or scholar).



TOP-RANKING PHILIPPINE PRIVATE UNIVERSITY

2

Ranking among 289 HEIs in the Philippines

41

Southeast Asia ranking among 3861 HEIs

476

Asia/Pacific ranking among 15783 HEIs

1643

World ranking among 11994 HEIs

Source: Ranking Web of Universities



2401 (twen'te fôr'ô, wun) is a landmark number along Taft Avenue. It is the location ID of De La Salle University, home to outstanding faculty and students, and birthplace of luminaries in business, public service, education, the arts, and science. And 2401 is the name of the official newsletter of DLSU, featuring developments and stories of interest about the University.

2401 is published bi-weekly by the Office for Strategic Communications (AH-21F, intercom 144). Editorial deadline is 3 p.m. Tuesdays. Contributions should include the name, office and signature of the sender. Materials may be edited for clarity or space.

2401 may be accessed online through the URL: <http://www.dlsu.edu.ph>.

Executive Director | Johannes Leo Badillo
Editorial Supervisor | Ruby Carlos
 (ruby.carlos@dlsu.edu.ph)
2401 Vol. 52 No. 7 Artist-in-charge | Miguel Pabello

Writers | Anne Alina-Acuña, AA dela Cruz,
 Arfie Koc, Juan Horacio Gonzalez, Roy Monarch Sy
Editorial Support | Alaric Lopez de Leon
Multimedia Coordinator | Magsy Magbanua

Creative Director | Peter Varona
Art Director | Mark Louie Esteves
Graphic Artists | Chris Perez, Rhea Boholano, Thomas Miranda,
 Chana Garcia
Secretary | Virginia Umacob-Gases
Office Assistant | Raymond Menor