



## DLSU, NAGSULONG NG PROGRAMANG GE SA WIKANG FILIPINO

**PINAGTIBAY NG ACADEMICS COUNCIL NG PAMANTASANG DE LA SALLE** ang pagpapanatili ng kursong Filipino sa General Education (GE) kurikulum ng Pamantasan nitong Agosto, Buwan ng Wika.

Ayon kay Chancellor Br. Bernard Oca FSC, ang DLSU ay nasa mahalaga at natatanging posisyon upang pagyamanin, palawakin, at pakaibigin ang ating wika sa pamamagitan ng pananaliksik, pagtuturo, at pagpapalawak ng paggamit nito, upang makatulong na mapalaganap ang intelektuwalisasyon ng Wikang Filipino.

*Full story on Page 2* >

### What's inside

- |  |   |
|--|---|
| Balik-tanaw sa pagpapasinaya ng St. La Salle Hall        | 2 |
| DLSU's social innovation cited in British Council report | 3 |
| SHS students win in international Math olympiad          | 4 |
| DOST underscores support for DLSU's mobility innovations | 5 |

Ibinahagi ni Dr. Antonio Contreras, presidente ng Association of Faculty and Educators of De La Salle University, Inc. at propesor ng Political Science Department, na walang magbabago sa bilang ng units para sa GE ng mga mag-aaral sa lahat ng kolehiyo, sa halip ay magkakaroon ng pagbabago sa pamagat at tutok ng ilan sa mga kursong ito.

Sinabi ni Dr. Rhoderick Nuncio, tagapangulo ng Departamento ng Filipino, na nagkaroon ng kolaboratibong pagpapalano at konsultasyon na iangat ang Wikang Filipino sa antas ng scholarship na tutugon sa mga suliranin at hamon ng kasalukuyang panahon.

Sa mga kursong GE ng Departamento, ang Wika, Kultura, at Midya ay naglalayong gamitin ang teknolohiya at inobasyon para sa panlipunang kaunlaran.

Ang Introduksyon sa Filipinolohiya ay nakaangkla para unawain at saliksikin ang 17 UN SDGs mula sa lente ng iba't ibang disiplina tulad ng Pilosopiyang Pilipino, Sikolohiyang Pilipino, Sosyolohiya, Humanidades at iba pa. Ang Interdisiplinaryong Pananaliksik sa Iba't-ibang Larangan

ay nakadisenyo upang ibahagi sa nakararaming Pilipino ang resulta ng akademikong research na mauunawaan at magagamit sa panlipunang pagbabago at kaunlaran ng bansa. Dagdag pa ni Nuncio, maaaring gamitin ng ibang kolehiyo o pamantasan ang kursong ito bilang pamantayan o modelo sa kanilang pagdidisenyo rin ng mga kursong Filipino.

Ayon naman kay Dr. Feorillo Petronillo Demeterio III, direktor ng University Research Coordination Office at fakulti ng Departamento ng Filipino, ang bagong kurso na Interdisiplinaryong Pananaliksik sa Iba't-ibang Larangan ay nilikha ng Departamento ng Filipino upang magturo ng mga estratehiya kung paano maiisa-publiko at mapakinabangan ang mga kaalamang mula sa DLSU.

Binigyang-diin din niya na kailangan ang wikang pambansa para maging isang matatag na pamantasang sentro ng pananaliksik ang DLSU.



## Balik-tanaw sa pagpapasinaya ng St. La Salle Hall

**DALAWANG RESEARCHERS MULA SA DEPARTAMENTO NG FILIPINO NG DE LA SALLE UNIVERSITY (DLSU)** ang nakipagpanayam sa apat na dalubhasa ng unibersidad upang muling balikan ang kahalagahan ng Bulwagang San La Salle o St. La Salle Hall, na tinatawag ding LS Hall.

Nagbalik-tanaw simula sa pagkalatag ng nasabing cornerstone at tumanaw rin sa paparating na sentenaryo ng pagpasinaya ng nasabing bulwagan ang mga awtor, sina Joshua Mariz Felicilda, estudyante ng MA graduate studies sa Departamento ng Filipino at Dr. Feorillo Petronillo Demeterio III, miyembro ng fakulti ng Departamento at direktor ng University Research Coordination Office (URCO).

Sa kanilang papel, binanggit ng mga awtor na ang LS Hall ang pinakamatanda at pinakatanyag na gusali sa DLSU. Dinisenyo ito ni Tomas Mapua, inilatag ang cornerstone nito noong 1920, at pinasinayaan noong 1924.

Ang kanilang artikulo, “Ang Bulwagang San La Salle: Pakikipanayam sa Apat na Dalubhasa nitong Sentenaryo ng Paglatag ng Cornerstone ng Nasabing Pamanang Estruktura ng Pamantasang De La Salle Maynila,” ay lumabas sa *Malay* (Tomo XXXII Bilang 2 Hunyo 2020), isang multi/interdisiplinaryong journal sa Araling Filipino ng DLSU na internationally refereed at abstracted.

Pangunahing layunin nila ang maidokumento ang kasaysayan, kahalagahan, at kalagayan at direksiyon ng konserbasyon at restorasyon ng nasabing pamanang estruktura.

Kanilang kinapanayam si Dr. Jose Victor Jimenez, assistant professor sa kasaysayan, na may marami nang pananaliksik at publikasyon na nagawa tungkol sa institusyunal na kasaysayan ng nasabing pamantasan.

Si Josemari Calleja, ang kasalukuyang Associate Vice Chancellor for Campus Development, ay nagbahagi naman sa kanila ng mga ginagawang konserbasyon at restorasyon ng LS Hall.

Para sa usapin ng konserbasyon at restorasyon ng mga pamanang estruktura sa bansang Pilipinas, kinausap nila si Dr. Eric Zerrudo, ang direktor ng Center for Conservation of Cultural Property and Environment in the Tropics ng Graduate School ng Pamantasang Santo Tomas at isang alumnus ng DLSU.

Nagbahagi rin para sa kanilang papel si Br. Manuel Pajarillo FSC, dating miyembro ng Board of Trustees ng Pamantasang De La Salle at kasalukuyang Vice Chancellor for Research ng De La Salle Lipa.



# DLSU's social innovation cited in British Council report

**DE LA SALLE UNIVERSITY'S TEACHING ACTIVITIES PERTINENT TO SOCIAL INNOVATION** have significantly contributed to the promotion of education and inclusive communities, as noted in a commissioned regional study entitled "Social Innovation and Higher Education Landscape" released last July by the British Council.

The report assesses the social innovation ecosystem in the Philippines by drawing on survey data and a series of in-depth interviews and focus group discussions with academics, higher education institution officials, and social innovation practitioners.

It contains key findings in five areas: research, teaching, community engagement, collaborations, and social innovation ecosystem and systemic issues.

The country report revealed that "overall, 73 per cent of the teaching activities are provided by private higher education institutions." DLSU is one of only two institutions that make up the combined 41% of the total teaching activities by private HEIs.

Among DLSU's initiatives mentioned in the report is the Lasallian Social Enterprise for Economic Development (LSEED) Program, "which aims at promoting social innovation and social entrepreneurship to boost community engagement."

In the area of research, the report notes the emergence of incubators such as DLSU's Animo Labs. It likewise notes that when it comes to community engagement, HEIs have extension program offices or social action units, such as the University's Center for Social Concern and Action.

The report was prepared by the University of the Philippines, which partnered with the lead UK research team at the University of Northampton.

## Space Apps COVID-19 Challenge global finalist

**A TEAM FROM DE LA SALLE UNIVERSITY WAS A GLOBAL FINALIST IN THE SPACE APPS COVID-19 CHALLENGE INTERNATIONAL HACKATHON HELD RECENTLY.**

Celestial Snails Team, composed of Arturo Caronongan III, Kevin Olanday, In Yong Lee, Mary Anne Dominique Casacop, and Gabriel Santiago, developed an app called Snail Space (a wordplay for snail's pace), which gives a "safe space" by providing mental care and comfort during times of social isolation brought by the COVID-19 pandemic.

In developing the app, the creators were inspired by astronauts that experience social isolation while in space.

The US space agency National Aeronautics Space Administration (NASA), along with the European Space Agency (ESA), Japan Aerospace Exploration Agency (JAXA), the National Centre for Space Studies (CNES) of France, and Canadian Space Agency (CSA), hosted an all-virtual, global hackathon which brought together coders, entrepreneurs, scientists, designers, storytellers, makers, builders, artists, and technologists last May 30-31.

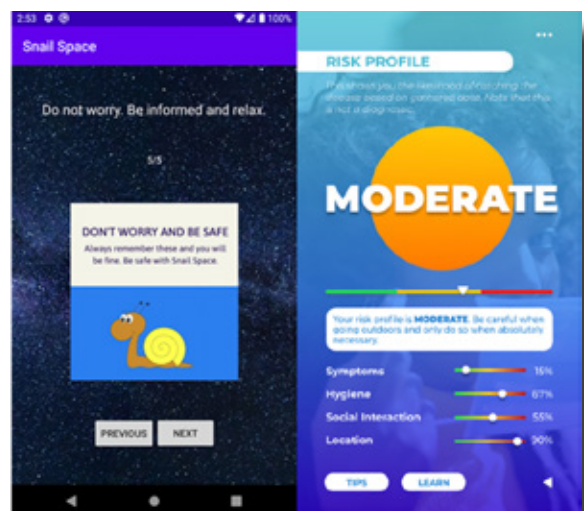
During a period of 48 hours, more than 15,000 participants from 150 countries created more than 2,000 virtual teams. Participants used

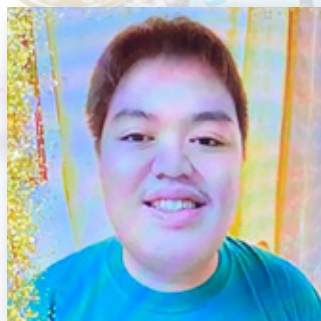
Earth observation and other open data to propose solutions to one of 12 challenges related to the COVID-19 pandemic.

An integrated public policy information portal measuring the impact of the coronavirus pandemic developed by Filipinos won the Space Apps COVID-19 Challenge in the best use of space data.

Reference:

<https://www.megabites.com.ph/pinoy-app-addressing-pandemic-impact-won-the-space-apps-covid-19-challenge>

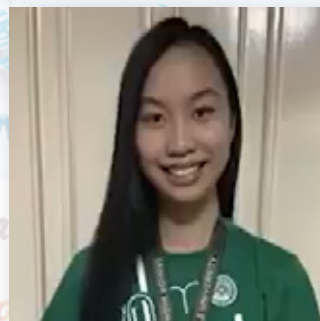




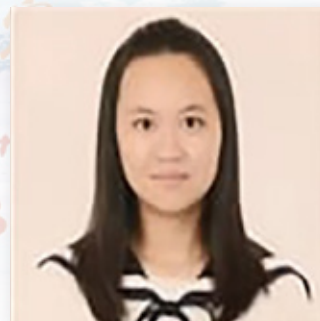
Al Patrick Castro



Nathan Jeremy Ang



Alyannah Ysabelle Chua



Bernadette Concepcion

二零二零年八月十六日 下午七時五 | 16<sup>th</sup> Aug 2020 7pm HKT

## DLSU LAGUNA CAMPUS UPDATES

### SHS students win in international Math olympiad

#### DLSU INTEGRATED SCHOOL (DLSU IS) STUDENTS WON IN THE GUANGDONG-HONG KONG-MACAO GREATER BAY AREA MATHEMATICAL OLYMPIAD HELD LAST AUGUST 16.

The Grade 12 students who participated in the Senior Secondary Category of the annual Math Olympiad competed with other Grade 10 to Grade 12 students from different countries.

Three students advanced to the 1st Place Award qualifying round, where Al Patrick Castro won a trophy for clinching the No. 1 spot in the Global Ranking, while Nathan Jeremy Ang also won a trophy for ranking 3rd, followed by Alyannah Ysabelle Chua at 4th place.

Bernadette Concepcion entered in the 3rd Place Award Qualifier bracket, where she finished 10th in the Global Ranking for the Senior Secondary Category.

The Guangdong-Hong Kong-Macao Greater Bay Area Mathematical Olympiad is an annual competition participated in by over 1,000 students from all over the world.

### COS holds Professorial Chair Webinar lecture series

#### THE OFFICE OF RESEARCH AND ADVANCED STUDIES OF THE COLLEGE OF SCIENCE HELD A PROFESSORIAL CHAIR WEBINAR LECTURE SERIES

last August 21, featuring topics that ranged from using parasites in agricultural pest control to finding a solid link between diabetes and Alzheimer's disease.

For the Cesar A. Buenaventura Distinguished Professorial Chair in the College of Science, University Fellow and Biology Department Full Professor Dr. Divina Amalin tackled "BioControl Success Story: The Case of 'COCOLISAP', or *Aspidiotus rigidus*, Outbreak Control in the Philippines". The study looked into parasites, which were used to suppress pests, leading to the full recovery of infested coconut plants.

For the Br. Goslin Camillus Chair of Life Sciences and Don Jose Cojuangco Chair in Chemistry, Dr. Drexel Camacho of the Chemistry Department presented "Food Chemistry and Rice: Tackling the Malnutrition Problem," a research project about fortifying milled rice with nutrients as a way to address malnutrition issues.

Dr. Romeric Pobre of the Physics Department talked about "Updates in Biophysics Instrumentation for SARS-Cov-2 (COVID 19) Studies" for the Br. Henry Virgil Pellant Chair in Physics and Salvador R. Gonzalez Chair in Physics. Pobre cited recent developments and future prospects in biophysics instrumentation for the diagnosis and vaccine development of COVID-19 in the Philippines.

Mathematics Department's Dr. Angelyn Lao discussed how an existing mathematical model was used to study and understand the previously unknown role that insulin resistance plays in linking Type 2 diabetes and Alzheimer's disease. She presented "Systems Biology Approach of Understanding Insulin Resistance: Linking Type 2 Diabetes and Alzheimer's Disease" for the Br. C. John Lynan FSC Professorial Chair in Mathematics and Br. Albinus Peter FSC Professorial Chair in Mathematics.



# CCS Graduate Studies Online Colloquia

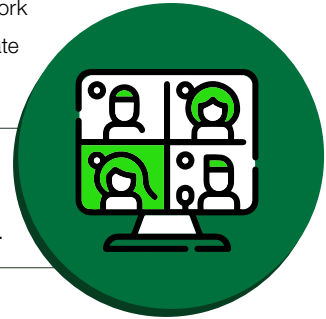
**THE OFFICE OF THE COLLEGE OF COMPUTER STUDIES (CCS) RESEARCH AND ADVANCED STUDIES IS SET TO HOLD A SERIES OF ONLINE COLLOQUIUMS FOR CCS GRADUATE STUDENTS.** This activity is geared towards introducing graduate students to different areas of computing and information technology. Each week, three graduate students from different programs are invited to make a presentation (15 minutes) on some aspect of their capstone projects, theses, dissertations, or recently published papers at a scholarly conference.

The online colloquium will run every Friday until September 25, from 3:30 PM to 5:00 PM. All CCS graduate students are encouraged to attend. Interested parties from all colleges and offices are also welcomed to register and attend the events.

The colloquium aims at bringing together graduate students in these fields and provides a fruitful platform for presenting ongoing research, exchanging ideas, and furthering the much-needed constructive discussion and conversation in a collegial atmosphere.

This venue seeks to ignite collaborative work among students from the different graduate programs of CCS.

Please register using this link to receive all the meeting details. (<https://forms.gle/sh4nzdqMeQUNsSnh6>).



## DOST underscores support for DLSU's mobility innovations

**THE DEPARTMENT OF SCIENCE AND TECHNOLOGY RECENTLY ANNOUNCED ITS SUPPORT FOR DE LA SALLE UNIVERSITY'S TWO PROJECTS** that seek to help improve the movement of goods, services, and people especially in this time of pandemic.

The TITAN: Vision-based Traffic Information and Analysis initiative as well as the Optimal Locations and Allocation of Personnel (OLAP) project are two mobility innovations that aim to improve and ensure a smooth travel experience in Metro Manila and other regions.

Executive Director Dr. Enrico Paringit of the DOST- Philippine Council for Industry, Energy and Emerging Technology Research and Development (DOST-PCIEERD) disclosed the Council's support to these projects.

To help reduce traffic congestion in the country, the projects use shared network systems with ample data on roads and highways.

"As leader and partner in innovation, we are committed to bringing to

Filipinos solutions and opportunities aimed at modernizing our transport systems and bolster the quality of life in the new normal," Paringit said.

TITAN is the phase two of the Vision-Based Vehicle Counter for Traffic Monitoring or VEMON project of DLSU which is a web-interfaced platform that can process day-time traffic from roadside surveillance cameras, and generate useful traffic statistics, such as vehicular count, vehicular speed, and others.

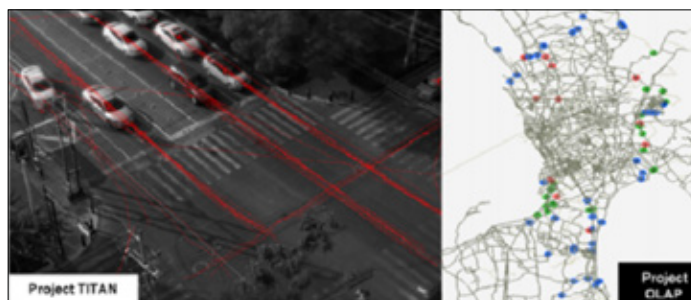
In TITAN, vehicle counts are conducted based on four scenarios: night-time or dim light scenarios, extreme lighting contrast, non-constant sampling rate, and up-stream and down-stream vehicular flows.

Computer Technology Associate Professor Dr. Joel Ilao serves as the team leader of the TITAN Project while Civil Engineering Full Professor Dr. Alexis Fillone serves as the project head of the OLAP program.

Reference: <https://mb.com.ph/2020/07/27/dost-reveals-innovations-to-improve-travel-experience-in-mm-other-regions/>



Ilao



Fillone

“For the love of God,  
make the effort.”

*De La Salle*  
Letter 98 - To an unnamed Brother,  
date unknown

# De La Salle University

## 2020 Virtual Job Expo July 12-17

**132,251**

Total reach during the Virtual Job Expo  
(Number of people who viewed  
any of the posts at least once)

**63** Participating  
companies



**4** Virtual  
company  
talks

**403** Participants  
of virtual  
company talks

**466** Participants  
of virtual career  
recruitment sessions

**5** Virtual career  
recruitment  
sessions

Source: Office of Counseling and Career Services



2401 (twen'te fôr',o, wun) is a landmark number along Taft Avenue. It is the location ID of De La Salle University, home to outstanding faculty and students, and birthplace of luminaries in business, public service, education, the arts, and science. And 2401 is the name of the official newsletter of DLSU, featuring developments and stories of interest about the University.

2401 is published bi-weekly by the Office for Strategic Communications (AH-21F, intercom 144). Editorial deadline is 3 p.m. Tuesdays. Contributions should include the name, office and signature of the sender. Materials may be edited for clarity or space.

2401 may be accessed online through the URL: <http://www.dlsu.edu.ph>.

**Executive Director** | Johannes Leo Badillo  
**Editorial Supervisor** | Ruby Carlos  
(ruby.carlos@dlsu.edu.ph)  
**2401 Issue 18 Artist-in-charge** | Miguel Pabello

**Writers** | Anne Alina-Acuña, AA dela Cruz,  
Arjie Koc, Juan Horacio Gonzalez, Roy Monarch Sy  
**Editorial Support** | Alaric Lopez de Leon  
**Multimedia Coordinator** | Magsy Magbanua

**Creative Director** | Peter Varona  
**Art Director** | Mark Louie Esteves  
**Graphic Artists** | Chris Perez, Rhea Boholano, Thomas Miranda,  
Chana Garcia  
**Secretary** | Virginia Umacob-Gases  
**Office Assistant** | Raymond Menor