



GUIDE FOR TEACHERS WITHOUT BORDERS

Guide for Teachers without Borders: DLSU’s online training for 2,000 teachers

A POOL OF FACULTY MEMBERS FROM DE LA SALLE UNIVERSITY recently spearheaded an online course design and management program entitled, Guide for Teachers without Borders (GTB), with 764 teachers from across the country participating in the first run of the training program.

Continue on Page 2 >

What’s Inside

Want to share your knowledge and experience in online teaching?	2
VCRI, international experts tackle plastic pollution amid COVID-19 pandemic	3
BAG CED associate professor joins international team in child languages research	4
Laguna Campus welcomes incoming freshmen	5

GTB aims to improve the capacity of teachers from small private schools and help prepare them for online distance learning (ODL) delivery. The first series started last June 26, with 18 faculty members from DLSU serving as instructional coaches. For the second run which will commence in August, GTB plans to reach out to 1,200 more teacher participants.

According to Br. Hans Moran FSC, PhD, chair of the Educational Leadership and Management Department (ELMD) of the Br. Andrew Gonzalez FSC College of Education, the idea for the program stemmed from an inquiry made by Br. Armin Luistro FSC, Visitor of the Lasallian East Asia District (LEAD), who saw the need to support schools under the Government Assistance to Students and Teachers in Private Education (GASTPE)* amid the challenges of the COVID-19 pandemic.

“This inquiry from Br. Armin came at a time when the ECQ was in full effect in the NCR and the Educational Leadership and Management Department was looking for a way to be of service to our front liners and other people affected by the pandemic. We wanted to be of service based on our gifts and expertise – being teachers,” Br. Hans said.

He added that upon the discussion between ELMD, Philippine Education Assistance Committee (PEAC), and Br. Armin, it was settled that ELMD would make and run the program, PEAC would fund, recruit, and select the teachers for the GTB, and the De La Salle Brothers, Inc. through the Kada-uno program would donate an amount of money to PEAC to help with the funding.

The first batch is a mix of participants from Regions 1 to 12, representing different education levels from K to 12, with the majority teaching high school. A number of them also came from La Salle-supervised schools and some from higher education institutions.

ELMD Associate Professor and Academic Support for Instructional Services and Technology (ASIST) Director Dr. Jasper Vincent Alontaga, who developed the GTB program,

pointed out that to help the participants contextualize the modules to specific grade levels, the program offers Professional Learning Communities (PLCs). The PLCs—namely, K-3, 4-6, 7-10, 11-12, UG-Grad, and a mixed group—provide a venue for the teachers to join the live Q&A sessions every Tuesday and the sharing sessions every Friday.

GTB focuses on the principles that are salient and relevant in the online environment. Dr. Christine Joy Ballada, associate professor and vice chair of the Counseling and Educational Psychology Department, said: “We highlight, for example, formative assessment. In a face-to-face session, it is crucial to give feedback to students, but it is all the more important now that we are in a new learning environment. The principles of assessment will actually apply to any level, regardless of the level or the mode of delivery, whether face-to-face or online.”

ELMD Assistant Professor Carmelea Ang See shared that for the DLSU educational coaches, they get inspired and motivated by the participants who, despite having a steep learning curve, are gradually learning technology and becoming more interactive.

While Br. Hans pointed out that the strength of the program lies in the coaches and the amount of coaching they do, Dr. Ballada also noted that GTB allows the building of a wider community of educators all across the country, a network that can be sustained by the participants.

“The teachers enrolled become the exemplars of their schools. They become the impetus for positive change that we are looking for in addressing the challenges of COVID-19. In the longer term, they also become more progressive in their pedagogy, more open towards exploring ways and means of reaching out to higher learning objectives. These are the seeds we are planting. In the future, it comes to full fruit, especially with our students,” Br. Hans said.

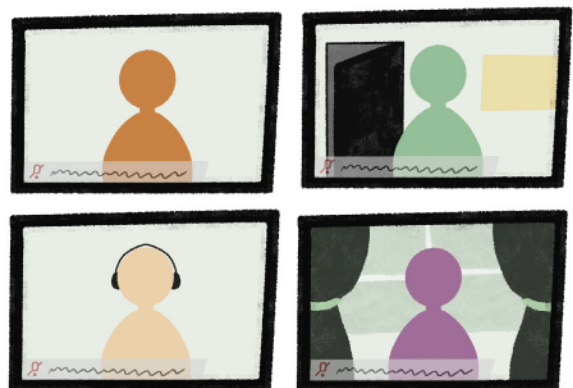
*GASTPE is provided by DepEd to small private schools, which are a key partner of the government in the delivery of quality basic education. The management of GASTPE has been contracted out by DepEd to the Private Education Assistance Committee (PEAC), which is the trustee of the Fund for Assistance to Private Education (FAPE), a perpetual trust fund created by and between the Philippine and United States governments under Executive Order No. 156, s. 1968.

Want to share your knowledge and experience in online teaching?

Be part of the Guide for Teachers without Borders, the Online Course Design and Management Training Program of the Br. Andrew Gonzalez FSC College of Education.

As an instructional coach, you will mentor early childhood to higher education teachers from all over the country as they take on the challenge of providing online instruction in the new school year.

FOR MORE INFORMATION, SEND AN EMAIL TO



REQUIREMENTS

- 1 Completed the ASIST AnimoSpace Certification Course
- 2 Knowledgeable in Google for Education Apps
- 3 Preferably with K-12 experience

The next training program starts on August 10.

VCRI, international experts tackle plastic pollution amid COVID-19 pandemic



DLSU Vice Chancellor for Research and Innovation, University Fellow, and Chemical Engineering Full Professor Dr. Raymond Girard Tan recently coauthored a paper entitled “Minimising the present and future plastic waste, energy and environmental footprints related to COVID-19” with collaborators from Brno University of Technology (VUT) in the Czech Republic and A*STAR in Singapore.

The paper’s lead author is Prof. Dr. Jiří Klemeš of the Sustainable Process Integration Laboratory (SPIL), NETME Centre, Faculty of Mechanical Engineering (VUT), and also includes postdoctoral researchers Dr. Yee Van Fan (VUT) and Dr. Peng Jiang from the Department of Systems Science, Institute of High Performance Computing (A*STAR) as coauthors.

The article was published in the July 2020 issue of *Renewable and Sustainable Energy Reviews*, in a special section dedicated to COVID-19, Society, and the UN Sustainable Development Goals. The journal has an Impact Factor of 12.11, and is ranked by Google Scholar as the world’s top journal in the subject area of sustainable energy.

In their work, the authors discuss the environmental implications of the COVID-19 pandemic on plastic pollution in light of shifts in consumer behavior and the surge in virus-laden medical waste. They also point out key opportunities to use the pandemic as a pivot point to transition towards more sustainable waste management practices in the future.

FOR FULL ACCESS:

Editor-in-chief of new Elsevier journal

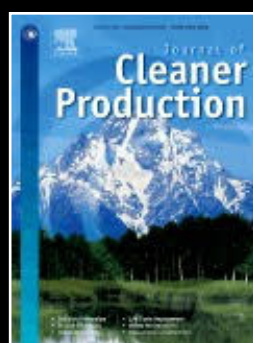
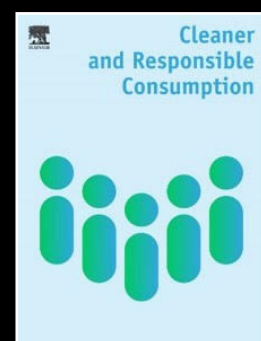
University Fellow Professor Anthony SF Chiu of the Industrial Engineering Department recently accepted the post of editor-in-chief of a new Elsevier journal, *Cleaner and Responsible Consumption (CLRC)*, for 2020-2023.

CLRC will publish current research on sustainable and responsible consumption and aims to offer an interdisciplinary overview of research, encouraging discussion and debate on sustainable and responsible consumption from government, business, academia, and societal innovators.

CLRC will cover vast transdisciplinary research topics across various fields, from engineering and science to behavioral science, social science, and others. The journal is a spinoff of the *Journal of Cleaner Production (JCLP)*, wherein Chiu served as its first ASEAN editorial board member since early 2000s.

JCLP is a Scimago Q1 journal, has an Impact Factor of 7.246, and is listed in Scopus as a 96th percentile journal in three subject areas. Chiu edited several special issues for JCLP from 2002, and in 2019 served as Plenary Speaker at the JCLP Conference in Hong Kong.

Dr. Kathleen Aviso of the Chemical Engineering Department has been appointed as Executive Editor of JCLP starting July 2020, following a two-year stint as Associate Editor.





BAG CED associate professor joins international team in child languages research

Together with international collaborators, Br. Andrew Gonzalez FSC College of Education Associate Dean and Department of English and Applied Linguistics Associate Professor Dr. Aireen Barrios-Arnuco joins the research team working on “Realizing Leibniz’s Dream: Child Languages as a Mirror of the Mind.” The research project seeks to develop a new linguistic theory explaining language and its acquisition. It carries the central hypothesis that language radically compresses thought structures to sound or sign.

Arnuco serves as an official local investigator for the language Chabacano for the duration 2020-2025. She will be gathering and analyzing data from comprehension and production experiments with Filipino children aged 4-7 years whose first language is Chabacano, Philippine Creole Spanish.

The project, also called “LeibnizDream”, is based in three host institutions: Humboldt University of Berlin (HU), University of Milan-Bicocca (UniMiB), and the Leibniz-Centre General Linguistics, Berlin (ZAS), under three lead proponents Artemis Alexiadou (HU), Maria Teresa Guasti (UniMiB), and Uli Sauerland (ZAS).

The researchers re-examine a century-old assumption that language shapes thinking, proposing instead that thought comes first, followed by its linguistic realization.

Their project was named after German polymath Gottfried Wilhelm Leibniz, who posited that human language is the key to understanding the human mind. The LeibnizDream group further casts doubt on the usually assumed 1:1 correspondence between thought and language. Rather, they argue, a thought is incredibly complex and can only be expressed in compressed language.

They also believe that child languages are a mirror of the human mind and have recruited collaborators such as Arnuco for studies on more than 50 languages from 21 different language families, two sign languages, and two creoles.

LeibnizDream receives over 10 million euros in support from the European Research Council, through its 2019 Synergy Grants. The six-year project will start this year.



AN ELEGY TO FORGETTING

BY MR. KRISTOFFER “TOPS” BRUGADA

DLSU Department of Communication
Senior Professorial Lecturer



A GOLDEN GOBLET AWARD OFFICIAL SELECTION

The 23rd Shanghai International Film Festival (SIFF)
Running from July 25 to August 5, 2020

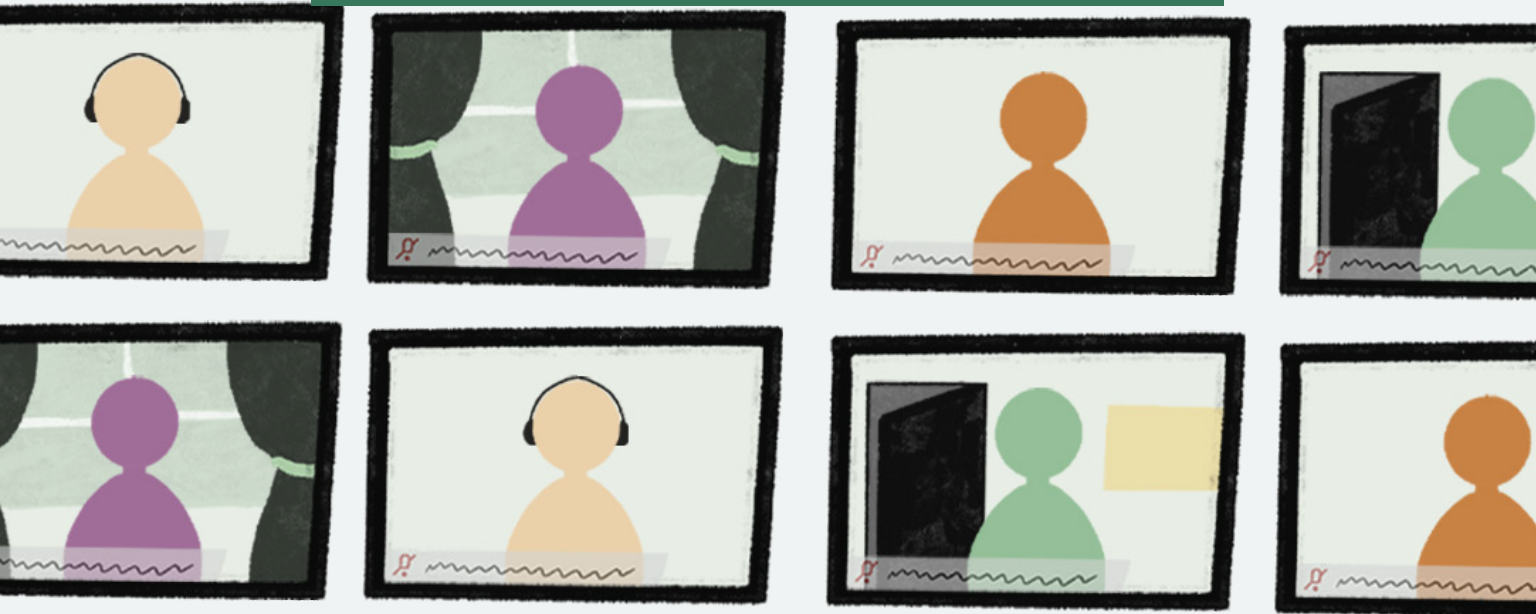


Film by DLSU faculty gets world premiere at Shanghai International Film Fest

A film by a faculty member of the DLSU Communication Department became part of the Golden Goblet Award Official Selection and had a world premiere at the 23rd Shanghai International Film Festival (SIFF) from July 25 to August 2.

The film entitled *An Elegy to Forgetting* by Professional Lecturer Kristoffer “Tops” Brugada documents a filmmaker’s experience with his father’s death due to Alzheimer’s disease. Taken from a personal perspective, the filmmaker gives a first-hand look at how his family dealt with his father’s worsening Alzheimer’s disease and eventual death, leading him to realizations about memory, familial relationships, and his own mortality.

Brugada’s film delves into the importance of memories in the human experience – “how the ability to remember makes us feel alive, how its power can hold us, and how memory gives us what we need to feel and be human.”



GUIDE FOR TEACHERS WITHOUT BORDERS

GTB is an online course and management program designed by the DLSU Br. Andrew Gonzalez FSC College of Education and funded by the Private Education Assistance Committee for teachers nationwide.

18

Coaches in the first GTB run (June-July)

764

Teacher participants of the first GTB run

REGIONS
1-12

Locations of the participants

5

Modules per training course

- Moving towards Online Distance Learning (ODL)
- Instructional design in ODL
- Technologies in ODL
- Bridging content and pedagogy in ODL
- Nuts and bolts in ODL

SOURCE: Br. Andrew Gonzalez FSC College of Education



2401 (twen'te fôr',o, wun) is a landmark number along Taft Avenue. It is the location ID of De La Salle University, home to outstanding faculty and students, and birthplace of luminaries in business, public service, education, the arts, and science. And 2401 is the name of the official newsletter of DLSU, featuring developments and stories of interest about the University.

2401 is published bi-weekly by the Office for Strategic Communications (AH-21F, intercom 144). Editorial deadline is 3 p.m. Tuesdays. Contributions should include the name, office and signature of the sender. Materials may be edited for clarity or space. 2401 may be accessed online through the URL: <http://www.dlsu.edu.ph>.

Executive Director | Johannes Leo Badillo
Editorial Supervisor | Ruby Carlos
(ruby.carlos@delasalle.ph)
2401 Issue 16-in-charge | Chana Garcia

Writers | Anne Acuña, AA dela Cruz,
Juan Horacio Gonzalez, Arfie Koc, Roy Monarch Sy,
Kalikasan Castillo
Editorial Support | Alaric Lopez de Leon
Multimedia Coordinator | Magsy Magbanua

Creative Director | Peter Varona
Art Director | Mark Louie Esteves
Graphic Artists | Chris Perez, Rhea Boholano, Miguel Pabello, Thomas Miranda
Secretary | Virginia Umacob-Gases
Office Assistant | Raymond Menor