



# LSEED POTLIGHT

THE OFFICIAL  
NEWSLETTER  
OF LSEED CENTER

6 years

LSEED TURNS 6

9  
programs

LSEED

With 35  
initiatives

Across  
9 areas  
of  
engagement



vianco

Fresh Fruits and Vegetables Right at your Doorstep



## WHAT'S INSIDE?

MESSAGE FROM LSEED CENTER 2 | #LSEEDTURNS6 3 | NEWS FEATURE: LASALLIAN SOCIAL  
ENTERPRISE 5 | SE INSIGHTS 8 | LSEED NEWS FEATURES 11 | HULT PRIZE CORNER 14 |  
DLSU S.C.A.L.E CORNER 21 | UPCOMING EVENTS! 28

# MESSAGE FROM THE LSEED CENTER



It was exactly six years ago when we started the Lasallian Social Enterprise for Economic Development or LSEED as a component of the Sustainable Development Goals Localization Project of the Center for Social Concern and Action (COSCA). It was originally meant to localize SDG goals 8 and 17 of the United Nations through social entrepreneurship. At that time, we were aware that social entrepreneurship was a relatively new concept at DLSU and we had to make an extra effort not only to introduce it but also to enlist support from both the academic and non-academic units of the university. But with the right amount of passion, well-thought-out plans, and collective efforts of our stakeholders, LSEED has become a center for social entrepreneurship and innovation of DLSU and is now recognized both in the Philippines and abroad for its programs and initiatives. As I look back on our humble beginnings, I take pride in the fact



that we have been very consistent with our mission to be “of service to the poor and marginalized”. As part of the Lasallian mission family, we draw out our inspiration from the passion and openness of our students and faculty mentors to work with communities, whom we also consider as fellow formators, in building social enterprises that address and respond to societal divides and different forms of poverty.

As we fulfill our new institutional vision & mission as a Center, we encourage our stakeholders to co-journey with us and take inspiration from the many success stories of our students, faculty members, and communities. With your help, we can do so much more for the common good! Thank you and happy anniversary!

**- NORBY SALONGA**  
Founding Director, LSEED Center



## Vision

**LSEED Center** envisions itself to be an internationally recognized center for social entrepreneurship that promotes innovation, inclusion, and collaboration with emphasis on community-student partnerships and sustainable development.

## Mission

**The LSEED Center** is committed to form social entrepreneurs and innovators who are driven to contribute to community development and help localize the United Nations Sustainable Development Goals through social entrepreneurship.

A circular inset image showing a group of people, with the text "6 years" overlaid in white. The background of the entire graphic is a collage of photos showing students and community members engaged in various activities, with a central green circle containing the LSEED star logo and the text "LSEED TURNS 6".

6 years

LSEED TURNS 6

A circular inset image showing a group of people, with the text "9 programs" overlaid in white.

9 programs

A large white star logo with three upward-pointing arrows inside it, set against a green background.

LSEED

A circular inset image showing a group of people, with the text "With 35 initiatives" overlaid in white.

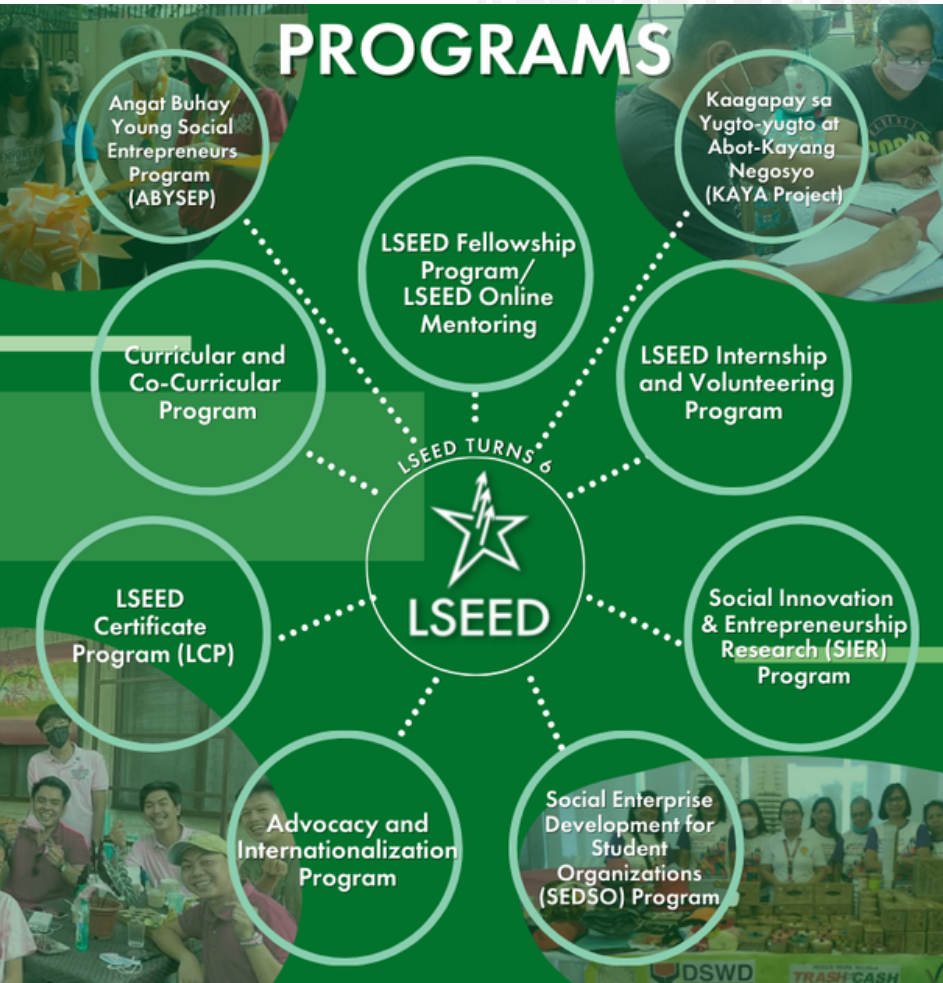
With 35 initiatives

A circular inset image showing a group of people, with the text "Across 9 areas of engagement" overlaid in white.

Across 9 areas of engagement



### PROGRAMS



### ACCOMPLISHMENTS





# LASALLIAN SOCIAL ENTERPRISE



by Sharlene Michelle Go



Vianco is a 3-year-old Lasallian social enterprise led by Wincel Ong and his team. This enterprise has uplifted the lives of several farmers in the Philippines by redirecting the traditional flow of goods from farmers directly to consumers. The business model ensures the profit goes directly to where the credit is due - to hard-working farmers. It also aims to establish Learniversity - a capacity program built to holistically help farmers manage business and finances. Just like all things, great successes come from small beginnings.

Wincel Ong and his group of friends joined the Hult Prize Competition and pitched VIANCO. Lo and behold, VIANCO has grown along with the community it has uplifted to the enterprise that it is today. Behind this successful enterprise is Wincel Ong. Wincel is currently studying at De La Salle University in the program of Masters in Business Administration. He is passionate about the SDGs on No Poverty, No Hunger, and Low Employment. He strongly believes in these advocacies will have a domino effect in pushing for a more equitable society. With this, he has channeled his passion into building VIANCO.

Wincel found his inspiration in social entrepreneurship when he joined the Hult Prize Competition. He never really thought of being involved in advocacy. For the most part of his life, he was just aiming to be involved in traditional businesses. One thing led to another, one inspiration led to action. He found himself pursuing VIANCO, not just for a competition but for the country.

The competition opened his eyes to see how much impact he can make by pushing forth his ideas to fruition. He learned how the issue is systemic in nature and how issues and challenges in agriculture are systematic. He believes that the system must be changed. There

## LASALLIAN SOCIAL ENTERPRISE



are several problematic layers inherent in the agricultural industry that inevitably puts the farmers in a losing position. They have no power over the retailers and traders, even if they themselves are the producers of crops. They are also robbed of proper market access due to a lack of education. The only way they know to generate revenue is by selling to middlemen, which exposes them to inequality.

Wincel is thankful for his team and his mentors that inspired and guided them in their journey. "It takes a village to build," he said while pointing out that for a social enterprise to work he needs to work with other stakeholders embodying the statement, "Don't ever think you can do it alone because it is impossible."

Wincel acknowledges the role of the LSEED Center in the development of VIANCO. "LSEED Center honed us with mentorship and with the network of social enterprises that we grew up with." He said that LSEED Center helped us approach the community in the most effective and ethical way - led them to be on the ground with the



Photos from Vianco Facebook Page



## LASALLIAN SOCIAL ENTERPRISE



farming community. The mentors enabled them to be more aware of the problems in society. “Iba yung na sa situation ka mismo vs. sa TV lang.” It also helped Wincel understand businesses shouldn’t only be profit-oriented.

VIANCO has come a long way since its launch, but Wincel and his team aren’t going to stop anytime soon. He explained that they will try to change the narrative of VIANCO - introduce new products, launch the platform, and pilot more projects in the community. Wincel said that they have experienced several obstacles along the way, such as sourcing adequate funding, managing human resources, and even dealing with the pandemic. They had to change the design of their operation because of the lockdown restrictions.

VIANCO is a reminder to the Lasallian community that the triple bottom line can be



Photo from Vianco Facebook Page

achieved with awareness, passion, and determination. Wincel shares a few tips that could help the younger generation achieve social entrepreneurial goals - Know your priorities; Be clear of your goals; and Focus on your vision. He also emphasizes the importance of knowing how to ask for help. “Don’t ever think no one could help. Just ask.” With the pandemic blurring the lines between work and home, Wincel also encourages being deliberate about rest.

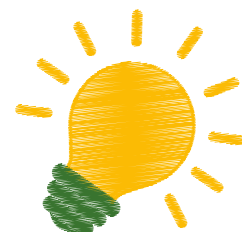
Wincel shares a last piece of wisdom for aspiring social entrepreneurs, “There is no perfect time for you to start social entrepreneurship. We piloted last year and it really changed and awakened us. If you are planning to be in social entrepreneurship, it’s a lot more difficult than traditional businesses; so you should know your ‘why’. If you decide to pursue it, do the work. Find something close to your heart. It doesn’t have to be big.”

“

***There is no perfect time for you to start social entrepreneurship. We piloted last year and it really changed and awakened us. If you are planning to be in social entrepreneurship, it’s a lot more difficult than traditional businesses; so you should know your ‘why’. If you decide to pursue it, do the work. Find something close to your heart. It doesn’t have to be big.***

”

# INSIGHTS ABOUT SOCIAL ENTREPRENEURSHIP



by Duane Kenneth Go



**VIANCO**



Having advocacy to live by is the advice of the majority of adults. Choosing a cause that is close to one's heart is an easy task but taking action to solve problems that are linked with one's chosen cause takes a lot of risks that involve a lot of factors. Wincel Ong took action when he - along with his friends - established Vianco, a social enterprise that has fulfilled his causes of no poverty, no hunger, and low employment. These advocacies surely pushed him and his partners to create an avenue for local farmers to sell their products directly to consumers. In his interview with the LSEED Center, Wincel highlighted the importance of having a support system in establishing a social enterprise. Highlighting that doing business alone won't get you far, but having the right people help you do the right things will ease all the obstacles that will occur along the way.

As you go on in your day, ask yourself what advocacy do you truly believe in? Regardless of your answer, think of ways on how you can leave an impact with the advocacy that is dearest to your heart. Think of like-minded people that will assist you in creating an impact and leaving a mark that your future self will thank you for. Always remember, in everything you do, it doesn't have to be big, nor does it have to be known by everyone. Choose to be passionate and truly happy in everything you do, the results will eventually follow.

## WINCEL ONG

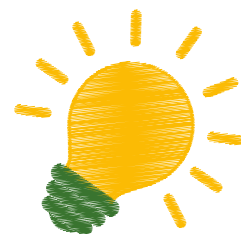
“

*As you go on in your day, ask yourself what advocacy do you truly believe in? Regardless of your answer, think of ways on how you can leave an impact with the advocacy that is dearest to your heart.*

”



# INSIGHTS ABOUT SOCIAL ENTREPRENEURSHIP



by Duane Kenneth Go

The 21st century has brought a lot of changes to the landscape of our society. Nowadays, the younger generations have been more proactive in carving their own path and leaving a legacy in everything they do. Whether it would be leading an organization in school or being passionate about things that bring fulfillment, it is no secret that the younger generation has been key in the progression of our society. Ritch Jeremiah Trballo, the President of DLSU S.C.A.L.E., a new student organization, is an example of what it means to create a path that will leave a legacy. Through DLSU S.C.A.L.E., he was able to fulfill his vision of providing a platform for Lasallian entrepreneurs to have a better trajectory in their enterprises. Furthermore, he was able to form an organization that will be remembered in the years to come. In his interview with the LSEED Center, he highlighted five habits that helped him achieve his accomplishments at a very young age.

As you go on with your day, take the time to assess yourself. Are you really on the right path? Are you getting to your utopia, or are you getting farther from it? You may not have it all figured out right now and building the habits that Ritch established may be overwhelming. But think of habits like a snowball. Snowballs may not be big initially, but through time and through consistent rolling, it

grows to an unstoppable object. Start small and pursue things that are dear to your heart. One way or another, it will get you to where you are. One thing you can take away from this interview is to remain consistent in the things that you do. Don't focus on your end goal or the results, it will come eventually.

## RITCH JEREMIAH TRABALLO

“

*Start small and pursue things that are dear to your heart. One way or another, it will get you to where you are.*

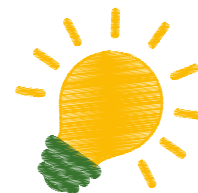
”



**DLSU S.C.A.L.E**



# INSIGHTS ABOUT SOCIAL ENTREPRENEURSHIP



by Duane Kenneth Go



## HULT PRIZE



**HULT  
PRIZE**

at DLSU

Marcus Aurelius was once quoted in his book *Meditations* as saying: “The impediment to action becomes action. What stands in the way becomes the way.” Lance’s interview with the LSEED Center embodies this quote perfectly. In his interview, he highlighted how he saw a lot of obstacles such as our government in creating an ideal world for everyone. He further highlighted how curiosity and determination allowed him to carve his own path. Taking up a leadership role in the Hult Prize allowed him to show his potential when it comes to solving issues in modern times. Through various competitions and projects that he managed, he was able to get one step closer to his goal.

As you go on with your day, take the time to think about how you can make your impact. It doesn’t have to be big or it doesn’t have to be revolutionary. Just leave the impact you wish to leave on the world so that

in the future, you may look back on your youth and be proud that you fought for something that is close to your heart and you truly believed in.

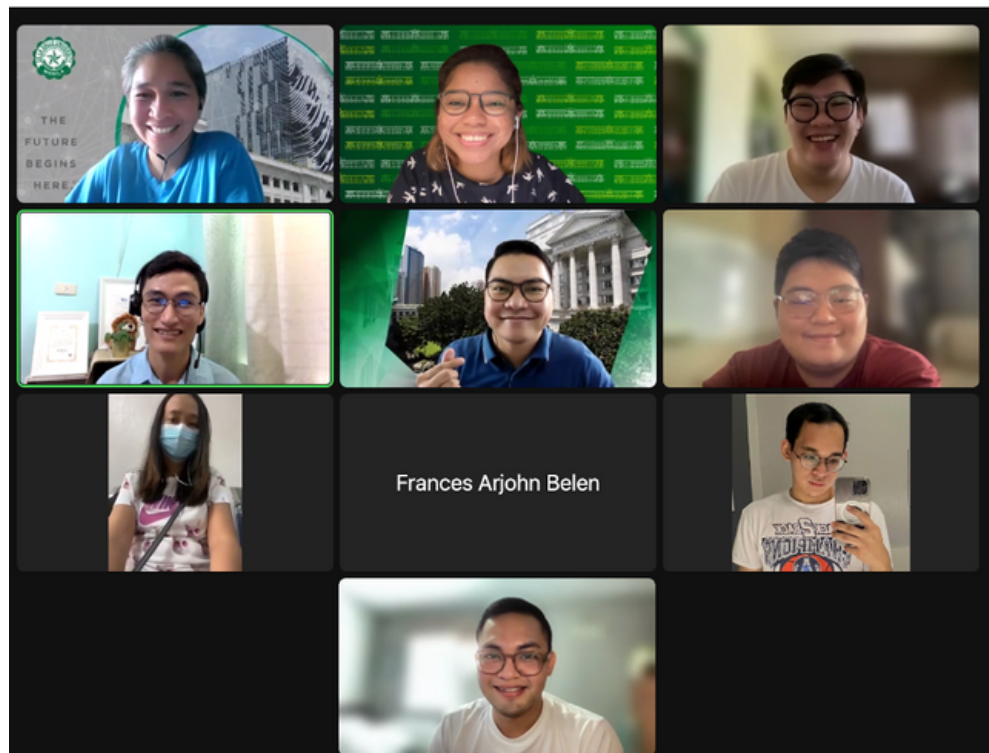
## LANCE SPENCER YU

“

*As you go on with your day, take the time to think about how you can make your impact. It doesn’t have to be big or it doesn’t have to be revolutionary. Just leave the impact you wish to leave on the world...*

”





# NEWS FEATURE

Photo: SEL's Orientation held last March 12, 2022

## SEL'S GETTING READY FOR

## TERM 2 NSTP-LSEED CLASSES

Last March 12 and 22, 10 new Social Engagement Lecturers (SELs) were given an orientation in preparation for the NSTP-LSEED classes in Manila and Laguna campus for Term 2 of AY. 2021-2022.

The said orientation provided an opportunity for the new SELs to not only learn about the program but also get to know one another. It was attended by the new SELs: Ms. Jacqueline Calimlim, Mr. Paolo Lozano, Mr. Edmerson Calungsod, Mr. Arjohn Belen, Mr. Jayvann Olaguer, Mr. Ivan Evangelista, Mr. Roel Quenamot, Mr. Patrick Lo, Ms. Julie Nery, and Ms. Sheryll Casunuran. Also in attendance were Mr. Norby Salonga and Ms. Lounelle J. Godinez of LSEED Center, and Mr. Abraham Garcia of the NSTP and Formation Office (NFO).

During the sessions, an overview of the LSEED Center was presented followed by a

discussion of the course syllabus, important dates, classes, and community partner details. There was also a run-through of the workshop and an open forum at the end of the meeting.

SELs are part-time faculty members of the university who are practicing their expertise in the development sector, government institutions, and private corporations. Every term, a new set of SELs is enjoined to participate in the NSTP-LSEED classes. Through this course, Lasallian social entrepreneurship and social innovation were integrated into the design of the NSTP classes. For Term 2 of AY 2021-2022, there are 21 classes on the Manila campus and two classes on the Laguna campus.

## LSEED CENTER IMPLEMENTS A NEW SE PROGRAM WITH OVP



Photo:  
ABYSEP  
Participants'  
Orientation  
last Sept.  
21, 2021



The Lasallian Social Enterprise for Economic Development (LSEED) Center in partnership with the Office of the Vice President, is currently implementing the Angat Buhay Young Social Entrepreneurs Program (ABYSEP). The 12 selected teams, consisting of 48 young social entrepreneurs from seven different cities and provinces in the country, are given a total of Php 130,000 seed grant capital to jumpstart their social enterprises.

Selected teams include AM Organic, Re:Think Climate Learning Kit, Cup of Hope, DebtFree PH, Farmbassadors, Kapawa Social Enterprise, Pamanatag, Legacy Cafe, Sagup Negros, Food for Education, iTeach 2.0, and Twelve Topaz. These social enterprises are localizing the United Nations' Sustainable Development Goals (SDGs), specifically No Poverty, Zero Hunger, Good Health and Well-Being, Quality Education, Decent Work and Economic Growth, Reduced Inequalities, Sustainable Cities and Communities, Responsible Consumption and Production, and Climate Action.



Photo: VP Leni's Message during the ABYSEP Participants' Orientation last Sept. 21, 2021



As part of their preparations, online learning sessions were conducted from September to December 2021. These sessions equipped them with the knowledge, skills, values, and tools needed in order to properly ideate, design, test, and implement their social enterprise ideas in the post-COVID 19 world.

ABY SEP teams are having constant monitoring and mentoring sessions through the LSEED Online Mentoring (LOM) to ensure the success and sustainability of their social enterprises. According to Abraham Macoco, a member of AM Organic, ***"I am really blessed and honored to be part of this program, you are making [a] change. I am overwhelmed because I am learning so much."*** The culminating event of ABY SEP will be held in June 23, 2022.



Photos: Legacy Cafe's Grand Launch last March 1, 2022



Photos: ABYSEP Learning Sessions



# HULT PRIZE

De La Salle University



## HULT PRIZE CORNER

### What is **Hult Prize?**

The Hult Prize Foundation transforms how young people envision their own possibilities as leaders of change in the world around them. **With a US\$1,000,000 global startup prize as its anchor activity, the Hult Prize has brought impact-focused programs, events and training programs to over a million students globally, creating a pathway for youth everywhere to take action to build a better world.**

In just over a decade, the foundation has deployed more than \$65M into the impact sector which it helped create. **Operating on more than 2,000 college and university campuses in 121 countries with a global team of more than 30,000 staff, student volunteers, and changemakers,** the Hult Prize continues to be a disruptive global leader in education, soft skills training, and entrepreneurial development for the 21st century.



**We are Leading a Generation  
To Change The World**

[hultprize.org](http://hultprize.org)



## What is **Hult Prize @ DLSU?**

Hult Prize at DLSU is a student organization centered on social entrepreneurship under the supervision of De La Salle University's Lasallian Social Enterprise for Economic Development (LSEED). It hosts the annual OnCampus Program of Hult Prize which is considered as the largest student movement for social good and the biggest student competition in social entrepreneurship.

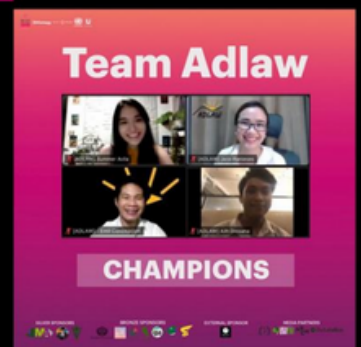
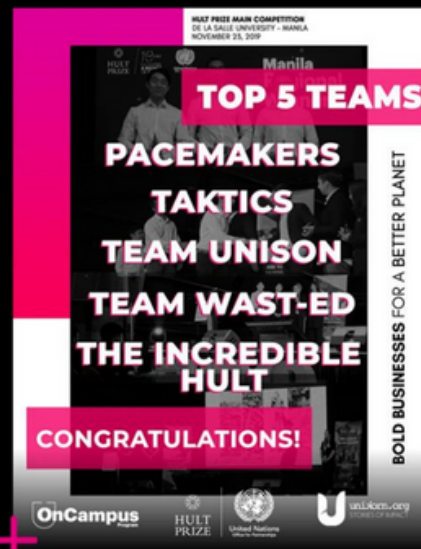
The event aims to identify and launch start-up social enterprises that have the potential to transform the world through sustainable impact. It gives Lasallians an opportunity to be the agents of change and be a part of the world's largest entrepreneurial training program with USD 1,000,000,000 annual global startup prize.



## **OnCampus** Program

With around 300,000 annual participants worldwide, Hult Prize at DLSU's OnCampus Program consists of bona fide undergraduate students of De La Salle University-Manila, who are responsible for **promoting the field of social entrepreneurship** to the Lasallian community.

Ten student teams will compete in the OnCampus Program and will be given a chance to pitch their social enterprise ideas to a panel of judges. **The winning team of Hult Prize at DLSU will represent the university and the Philippines to the Regional Finals.**



**OnCampus**  
Program

**We are Leading a Generation  
To Change The World**

[hultprize.org](http://hultprize.org)

## Winning Teams

### TriniTech Alliance

Trinitech Alliance is a social enterprise that launches, develops and manages innovative projects geared towards the localization of the Sustainable Development Goals. One of our projects, P65: Circula, involves the allocation of Circula machines in places with high plastic waste production. These machines will use sachets as currency for customers to procure products. These sachets, in turn, will be recycled and reused.

### 2021 Team Adlaw

Kagat Adlaw is a social enterprise that empowers Filipino street food vendors towards a brighter future as viable starting entrepreneurs. Seeing them as partners, they are key in helping shape a healthier culture of the street food ecosystem in the country as well as achieving the path out of food and nutrition poverty in the Philippines. In line with the SDGs of no poverty; zero hunger; good health and well-being; decent work and economic growth; industry, innovation and infrastructure; reduced inequalities; and responsible consumption and production, the primary goal of Kagat Adlaw is to offer a safe, legal, and sustainable street food cart business with clean, delicious and nutritious plant-based street food goods.



## Why join us?



The Hult Prize is how the world has to work in the **21st century**

-Bill Clinton



Deemed as the “**Nobel Prize for Students**,” the Hult Prize is one of the largest prime mover of impact-centered start-ups grounded on entrepreneurial strategies while leveraging on one’s business skills. Hult Prize challenges the young people to solve a pressing social issue that is modeled on the UN’s SDG through invoking a worldwide scale social impact through solving a problem and changing the system.

**We are Leading a Generation  
To Change The World**

[hultprize.org](https://hultprize.org)



# HULT PRIZE CORNER

## Impact of Hult Prize

- 50,000 Student Organizers - Annual Volunteers
- \$ 100,000,000 Invested in Impact - Directly Deployed Capital
- 2,100,000 Alumni Community - Committed to Impact
- 350,000 Trained Graduates - Every Single Year



## Hult Prize 2022 Challenge

### GETTING THE WORLD BACK TO WORK

Your 2022 challenge is to create two-thousand jobs by 2024 by thinking global and acting local!



**We are Leading a Generation  
To Change The World**

[hultprize.org](https://hultprize.org)



## ***Follow us!***

**Facebook:** Hult Prize at DLSU

**Instagram:** @hultprize@dlsu

**Website:** <http://hultprizeat.com/dlsu-manila>

Have any questions?

Reach out to [hultprizedlsu@gmail.com](mailto:hultprizedlsu@gmail.com)

**We are Leading a Generation  
To Change The World**

[hultprize.org](http://hultprize.org)



# HULT PRIZE

De La Salle University



## INTERVIEW WITH LANCE SPENCER UY

Hult Prize Campus  
Director

by Mary Patriece Carpio

To gain a glimpse of how he is leading a generation of changemakers, an interview with Lance Spener Yu, the current Campus Director of Hult Prize at DLSU was conducted. Lance quotes himself as an organized, creative, and goal-oriented person. These 3 traits show who Lance is on a surface level. From excel sheets for projects, writing poetry, and dreaming those projects into reality - these are what Lance embodies.

With all these amazing qualities, putting them into action is where it's at. As a committed advocate for the United Nations' Sustainable Development goals, Lance's main advocacies are SDG 10 (Reduced Inequalities), SDG 13 (Climate Action), and SDG 8 (Decent Work and Economic Growth). Delving deeper into social entrepreneurship and social innovation, he furthers his agenda by sharing his love of being part of the developmental sector. When he was young, he had aspirations of joining the government and bringing change. As he grew older, he soon realized that his own government might be another hurdle in bringing the change that is needed. Thus, it was until he learned about social entrepreneurship that he realized that he can still make a big impact by using this framework in businesses for good.

This is where the Hult Prize, an organization that supports social enterprises of all kinds, fits in the picture. He always wanted to contribute more to promoting social entrepreneurship; and, the Hult Prize gave him the platform to do that.

As a student organization under LSEED, Hult Prize allowed him to realize that social entrepreneurship does not have to be a small passion project type of undertaking. Instead,

**We are Leading a Generation  
To Change The World**

[hultprize.org](http://hultprize.org)

it can be something that incites change. Hult Prize's vision, "Anyone can be a changemaker," cleared the misconception that social entrepreneurship is only for business majors. Lance emphasized that everything stems from the passion and the technical skills that can be learned along the way. He hopes that by creating a welcoming environment in Hult Prize, they can invite more students to create sustainable businesses.

Recently, Hult Prize initiated its flagship project, Kindle, a sustainability case competition. This national competition strives to gather students to address real-life challenges experienced by social enterprises in hopes of improving the sustainability of their partner enterprise Nama Microgreens while also promoting social entrepreneurship in the country.

Lance advises the youth to **"Read, read, read."** He shared that his journey to becoming a social entrepreneur began through his curiosity which he explored through reading. "It



does not have to be thick novels," he stated. Instead, he encourages the youth to try reading articles about current events and accounts of other people's experiences because it is through expanding your horizons that you are able to better understand and empathize with others.

Indeed, the Hult Prize at De La Salle University (DLSU) is proof that anyone can have the power to become a changemaker. As the Campus Director of Hult Prize said, "Change will always feel uncomfortable, so just dive in. Make some mistakes and learn along the way. As cliché as it sounds, the most important thing is to start."



Photos from Hult Prize at De La Salle University Facebook Page

**We are Leading a Generation  
To Change The World**

[hultprize.org](https://hultprize.org)



## DLSU SCALE EST. 2021

Entrepreneurs are critical in driving a global economy and in creating solutions to improve our world especially these trying times. As Lasallian entrepreneurs ourselves, we believe that there is a need to holistically mold high-potential students when it comes to start-ups and provide them an avenue for innovation, network, opportunities, and mentorship towards actualizing their vision. Creating a community of talented thinkers and makers coming from different fields will help increase the success of these emerging ideas into notable ventures in the future. Hence DLSU SCALE was established.

## WHAT IS DLSU SCALE?

DLSU Startup Creator and Accelerator for Lasallian Entrepreneurs (SCALE) is a newly formed student organization that is under the Lasallian Social Enterprise for Economic Development (LSEED) Center of De La Salle University.

SCALE aims to help Lasallian start-ups and aspiring entrepreneurs build and grow their own ventures by focusing holistically on different fields.

### MISSION

SCALE provides an avenue for Lasallian start-ups and aspiring entrepreneurs to scale their ideas and vision through an interdisciplinary approach.

### VISION

SCALE envisions itself as a venture-building organization which fosters entrepreneurial innovation that would cultivate a sustainable and resilient business eco-system for the nation.



# DSLUS SCALE

SCALE is focused on cultivating a community that is driven by success and that is built by three core competencies of a startup:



## HACKER

### TECH & ENGINEERING

*Focuses on developing and building the product.*



## HUSTLER

### BUSINESS DEVELOPMENT

*Focuses on the operations and the management aspect of the business.*

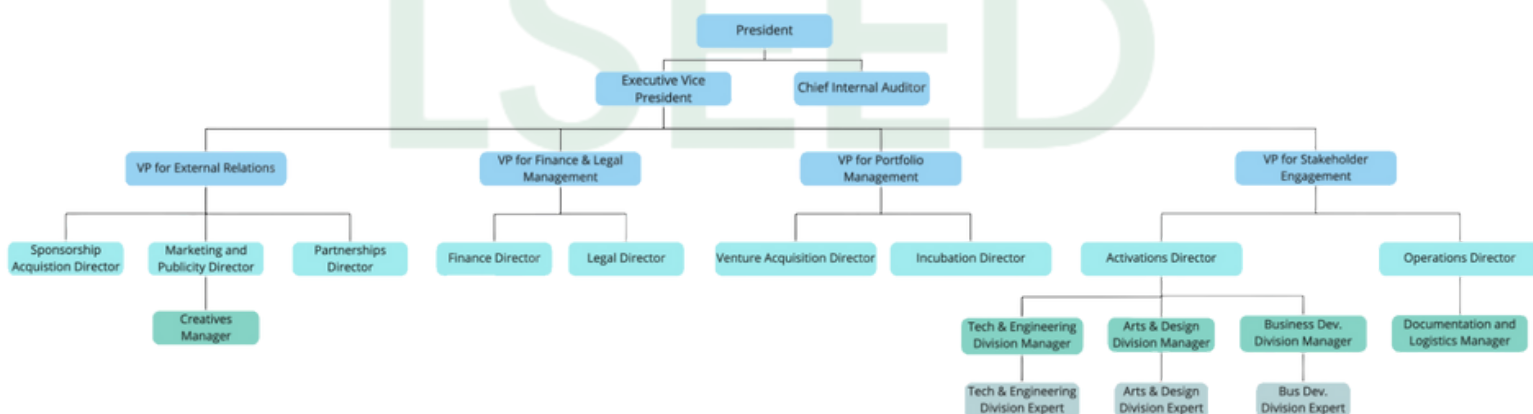


## HIPSTER

### ARTS & DESIGN

*Focuses on the customer-facing features and interface.*

## DSLUS SCALE ORG CHART





## External Relations Committee



External Relations creates the bridge of the organization to companies and professionals, building the overall network of the organization.

This committee is responsible for coordinating and acquiring all monetary or external sponsors/partnerships. In addition, they set the branding and design for the organization's publication materials while managing its social media accounts.

## Finance & Legal Management Committee



Finance & Legal Management provides the organization an arm in the finance and legal aspect.

This committee provides a financial standpoint and guidance to the start-ups and to the whole organization. Moreso, to help in the nitty-gritty side of the start-ups, the legal side is here to guide in the legal process of a business.

## Portfolio Management Committee



Portfolio Management scouts Lasallian Startups and MSMEs to join the organization. They guide the founders into building the right idea and finding product-market fit.

The team will help organize knowledge sessions and events to help teach founders the fundamentals of the startup process. The team members would also actively analyze and help startups with the help of the Stakeholder Engagement committee.

## Stakeholder Engagement Committee



Stakeholder Management maintains the relationship between the startups, members, and the administration.

The team will help build strategic plans and knowledge sessions for specific topics under each division, namely Tech & Engineering, Arts & Design, and Business Development. The team members would also be consultants to the startups to help accelerate their ventures and handle the internal stakeholders through human capital management.



**ALL THE BEST,  
FUTURE SCALERS!**

**Facebook:** DLSU SCALE

**LinkedIn:** <https://ph.linkedin.com/company/dlsu-scale>

Got any questions? Feel free to contact

[ritch\\_traballo@dlsu.edu.ph](mailto:ritch_traballo@dlsu.edu.ph)

[gwen\\_santos@dlsu.edu.ph](mailto:gwen_santos@dlsu.edu.ph)

LSEED

In the field of social entrepreneurship and social innovation, the Lasallian Social Enterprise for Economic Development (LSEED) Center became an inspiration for a community of future social entrepreneurs to thrive.

In an interview with the president of DLSU S.C.A.L.E, Ritch Jeremiah Trabello, he shared more insights about the newly instituted student organization. Ritch is a 4th-year Bachelor of Science in Applied Corporate Management student. His ENFJ-T personality has enabled him to create DLSU S.C.A.L.E. He first found his passion for social entrepreneurship through his parents who inspired him to get involved and build the mindset to give back to the community. However, it was at DLSU that he realized he can continue helping others more sustainably through business. Pursuing social entrepreneurship, he said, really has to come from the passion for helping others through a business that is not about profit. With this in mind, he started positioning his mindset by thinking “What can I do to make a permanent impact on the people?”

This is what drove him to create DLSU S.C.A.L.E. What started as a mere idea has grown into an organization that is now ushering Lasallian entrepreneurs towards success. Ritch saw that students do not have the time to develop and actualize ideas given the various responsibilities of a student. Hence, he created DLSU S.C.A.L.E. to provide a helping hand for start-ups to actualize their goals. DLSU S.C.A.L.E. aims to provide students with the network, skills, knowledge, and mentorship to help aspiring entrepreneurs. He wants to create a community at DLSU that will support the goals of budding entrepreneurs and push them even more to succeed. This vision was made possible through the support of the LSEED Center. From building the teams to creating the vision and mission, LSEED Center served as a community that gave them the inspiration to succeed. LSEED Center was their inspiration and is still their inspiration now.

## INTERVIEW

*by Mary Patriece Carpio*

# WITH RITCH TRABALLO

DLSU S.C.A.L.E President

D L S U  
S C A L E

CORNER



Moving forward, DLSU S.C.A.L.E. is progressively expanding itself in the DLSU community. Ritch's vision for this first year of DLSU S.C.A.L.E. is to build the foundations and establish it more for the community and its members. When asked for words of encouragement and advice to the youth, Ritch shared five habits that helped him achieve his successes.



Ritch Jeremiah Trabello is definitely an inspiration to all future entrepreneurs. His message for the youth of today is, ***“Do something that your future self will thank you for, our actions and decisions today will shape the way we will be living in the future.”***

## 1 PRACTICE DISCIPLINE

He emphasized the importance of removing distractions because these are what inhibits us from accomplishing more. Discipline is something that you need to constantly cultivate over and over. He shared that through practicing delayed gratification, he learned how to strive to be better.

## 2 SET A SHORT AND LONG-TERM GOAL

It's important for the youth to set goals and keep track of these goals so that they can achieve them. It is also important to balance long-term goals with short-term needs.

## 3 BE SMART WITH YOUR TIME

Despite admitting that he struggled with this, Ritch shared his insights on what motivates him to manage his time. He said, “We have 24 hours in a day – minus 8 hours of sleep, 3 hours for meals, and 3-5 hours for academic work. That means we only have 8-10 hours to hone our skills to be better.”

## 4 SHOW GRATITUDE EVERY MORNING OR EVERY WEEK

He said he picked this habit up from a close friend. He recommends writing what you are grateful for because it is different when you just say it in your mind and when you see it yourself. This habit enabled him to appreciate the things he has in life and radiate positive energy toward others.

## 5 PRACTICE SELF-ASSESSMENT

The last habit he shared was to reflect and do self-assessments every week. This allowed him to see the things he can improve on the next time. He believes that whenever people make mistakes, it is always important to follow through and correct them.

# UPCOMING EVENTS!



**MAY 27, 2022**

**LSEED Talks**

*Season 3,  
Episode 4*

**JUNE 5, 2022**

**LSEED Talks**

*Season 3,  
Episode 5*

## FEEDBACK



Let us know what you think below through our feedback form.

<https://bit.ly/LSEED-Feedback-Form>



<https://www.facebook.com/lseedph>



@lseedph



[www.dlsu.edu.ph/lasallianmission/lseed/](http://www.dlsu.edu.ph/lasallianmission/lseed/)



(632) 8524-4611 Local 120

**Access our Primer here:** <https://bit.ly/LSEED-Primer>

LSEED Spotlight is the name of the official newsletter of LSEED Center, featuring stories and developments of the organization and its stakeholders. The newsletter is published quarterly by LSEED Center.

**Volunteer Contributors** | Mary Patriece Carpio, Duane Kenneth Go, Sharlynn Michelle Go

**LSEED Center**

**Founding Director** | Norby Salonga

**Program Coordinator (Curricular)** | Lounelle Godinez

**Project Coordinator (Special Programs)** | Paula Nicole Zaldivar

**Office Assistant** | Ofelia Villanueva

**Project Assistant** | Je-ann Caras