



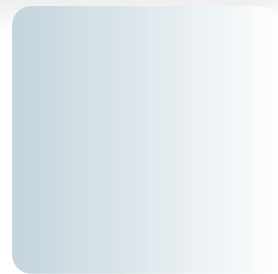
DE LA SALLE UNIVERSITY
INTEGRATED
SCHOOL

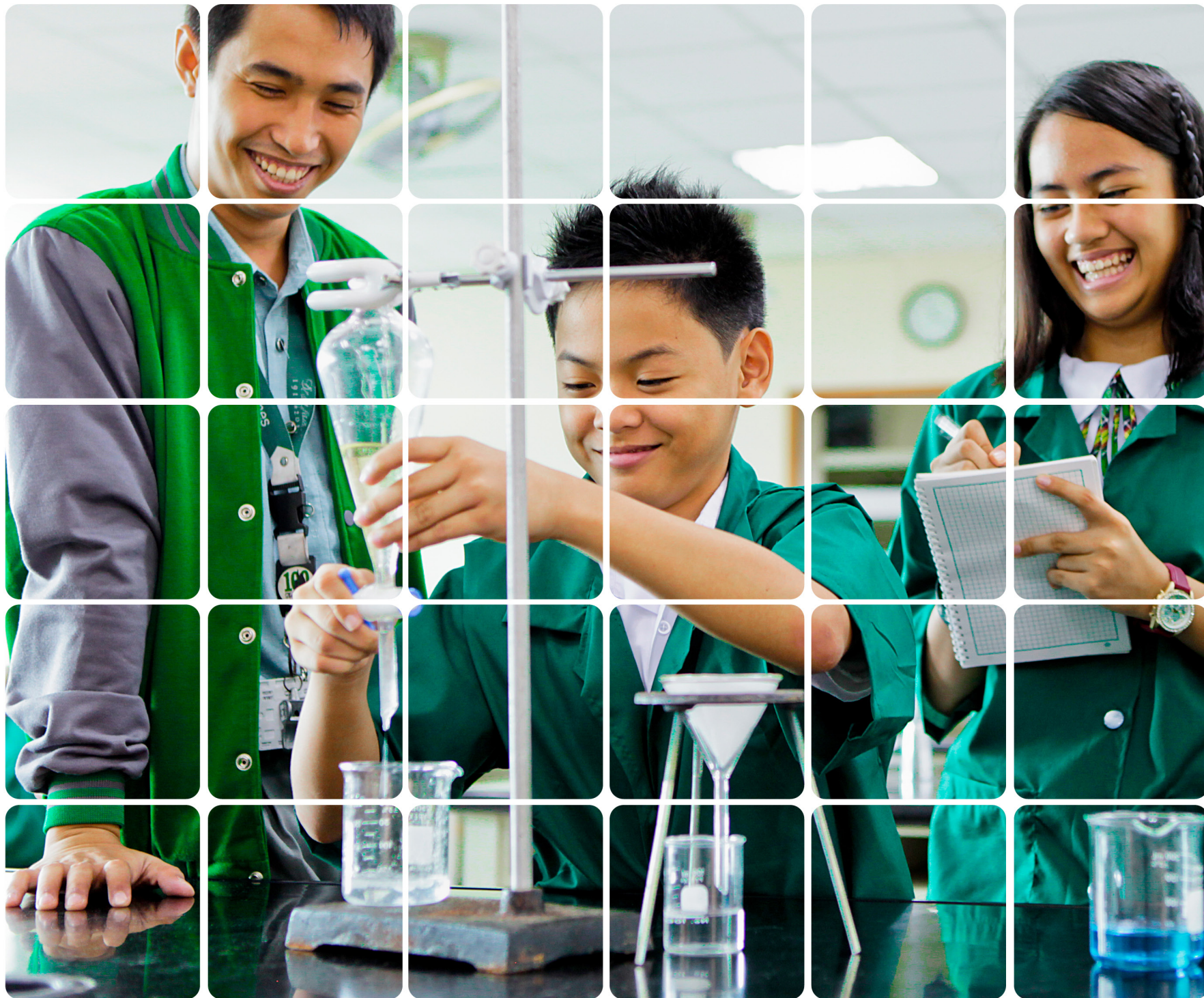
AT THE DLSU SCIENCE AND TECHNOLOGY COMPLEX
LEANDRO V. LOCSIN CAMPUS



Formerly operated by De La Salle Canlubang, the De La Salle University Integrated School emphasizes a science-oriented curriculum throughout all its kindergarten, grade school, and high school levels.

De La Salle University is a Catholic coeducational institution founded in 1911 by the Brothers of the Christian Schools. Positioned as a leader in building the foundation of tomorrow's leaders, the University is renowned for its academic excellence, groundbreaking research, and empowering community service.





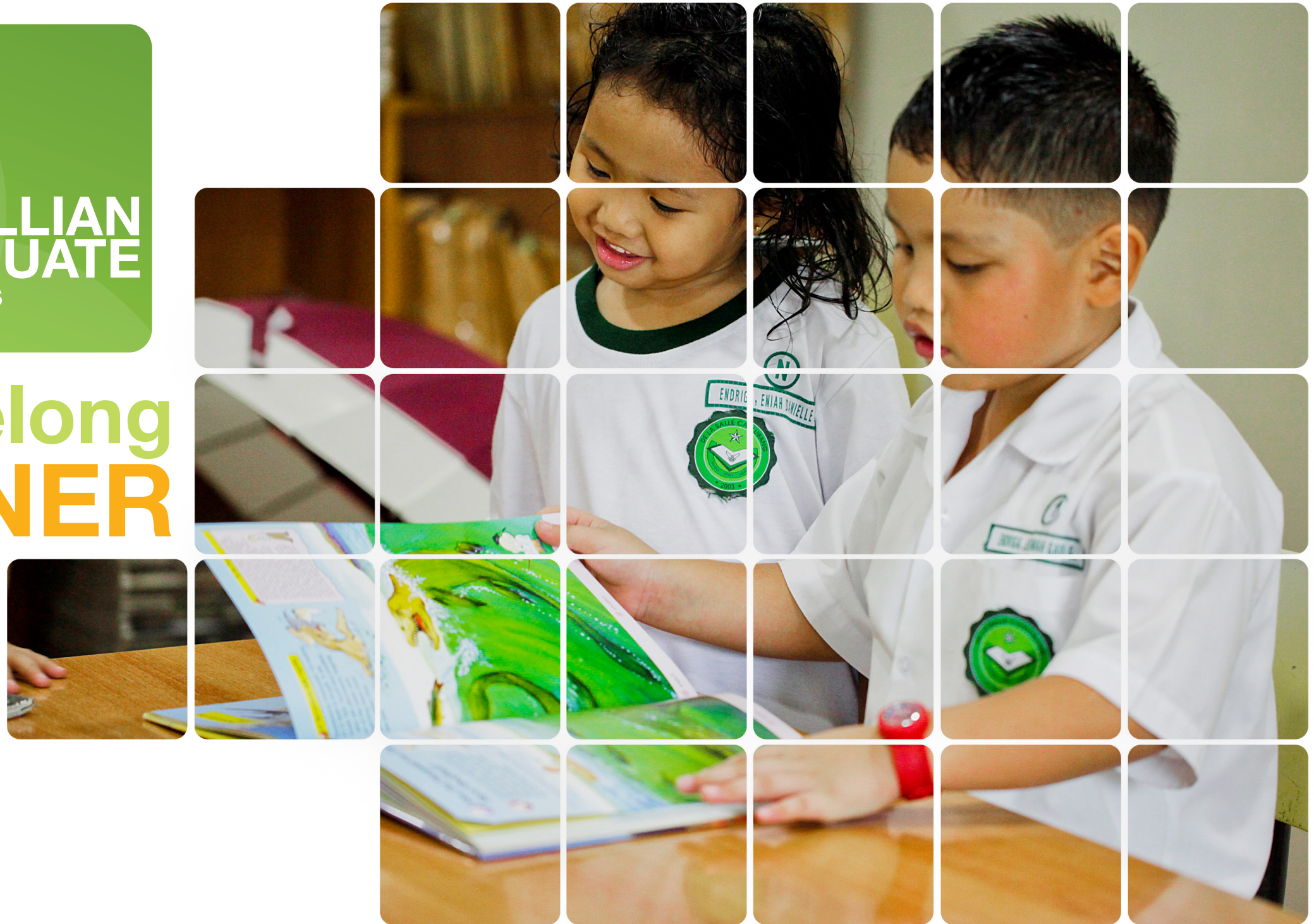
Curriculum

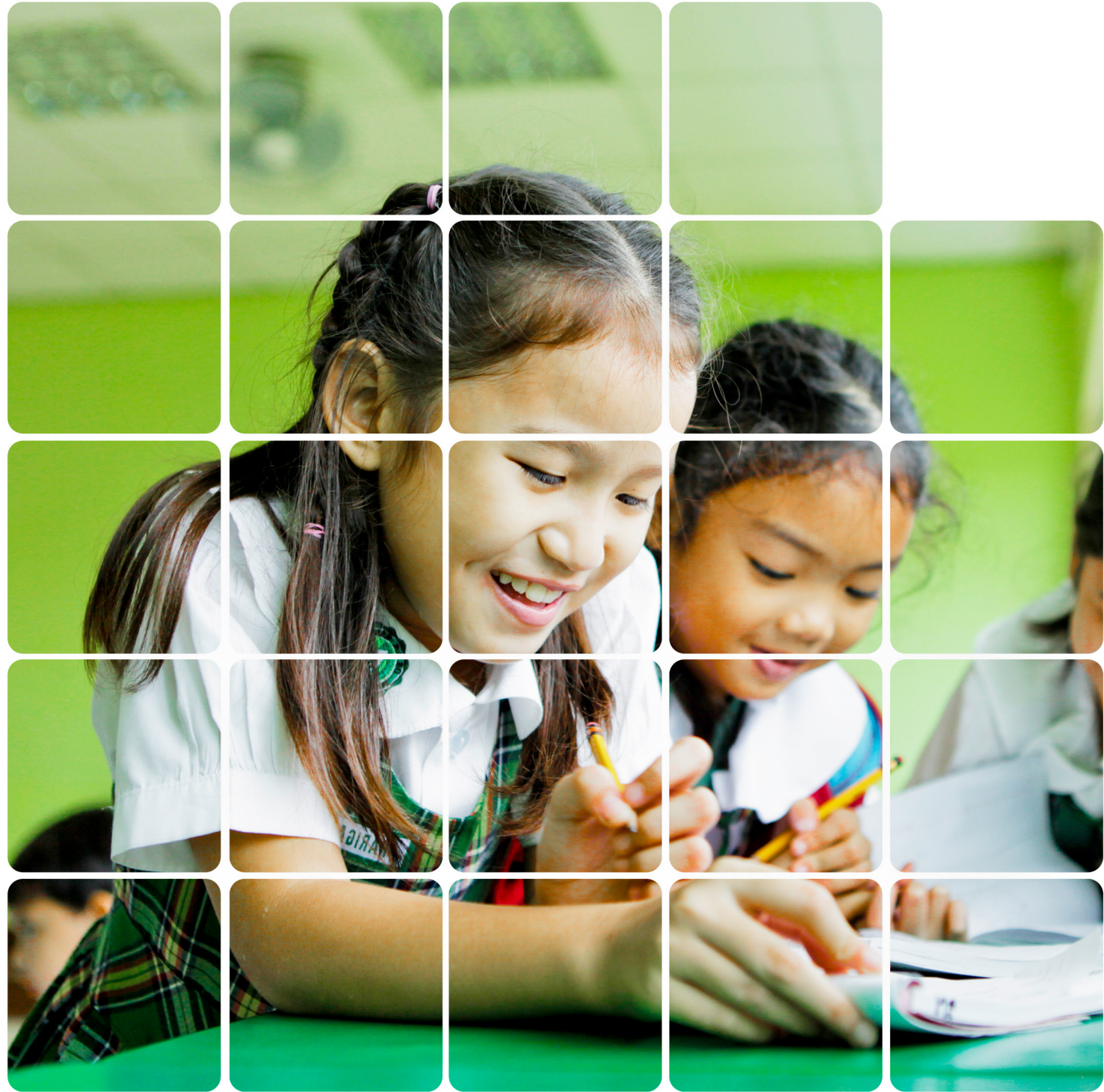
The Integrated School curriculum is designed to **reinforce** the development of **well-rounded** students, with **science** and **values** at its core. The structured integration of both foundation areas in all subjects and levels, and a **student-centered approach** on instruction and evaluation, helped equip the young minds under its care with the necessary **critical thinking abilities** to respond to societal and worldwide globalization trends and concerns.

Expected
LASALLIAN
GRADUATE
attributes

lifelong **LEARNER**

- Demonstrates passion for the chosen field of study
- Engages in the quest for self-improvement and excellence in view of responding to the needs of others, especially the poor
- Adapts the educational project in order to respond to changing/different needs and realities
- Shows courage and persistence in seeing changes and innovations through constant study





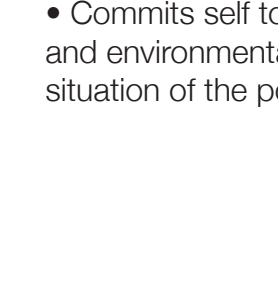
critical THINKERS

- Conceptualizes, analyzes, evaluates, synthesizes, and applies information gathered by or generated from observation, experience, reflection, reasoning or communication in the light of the Gospel values

ethical LEADERS

- Encourages collaboration and partnership
- Demonstrates moral imagination for social justice
- Empathizes with those who are of a different race, religion, economic background, political affiliation





social CATALYSTS

- Commits self to social justice, economic development, and environmental care for the transformation of the life situation of the poor

effective COMMUNICATORS

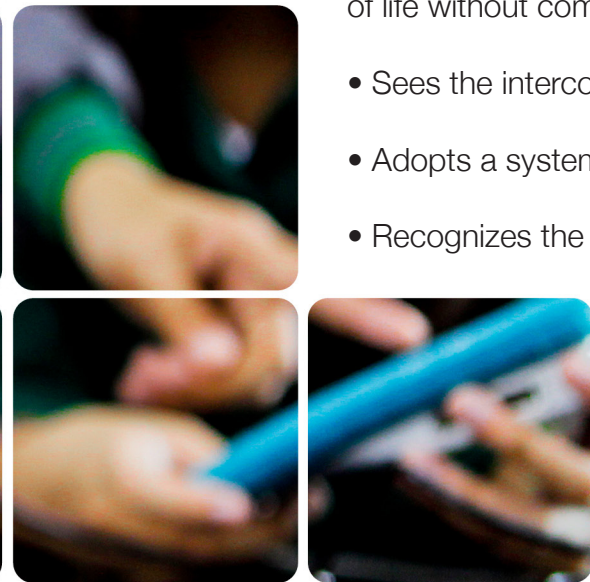
- Communicates effectively and appropriately within a range of contexts using literary, numerical, and information technology skills





environmental STEWARDS

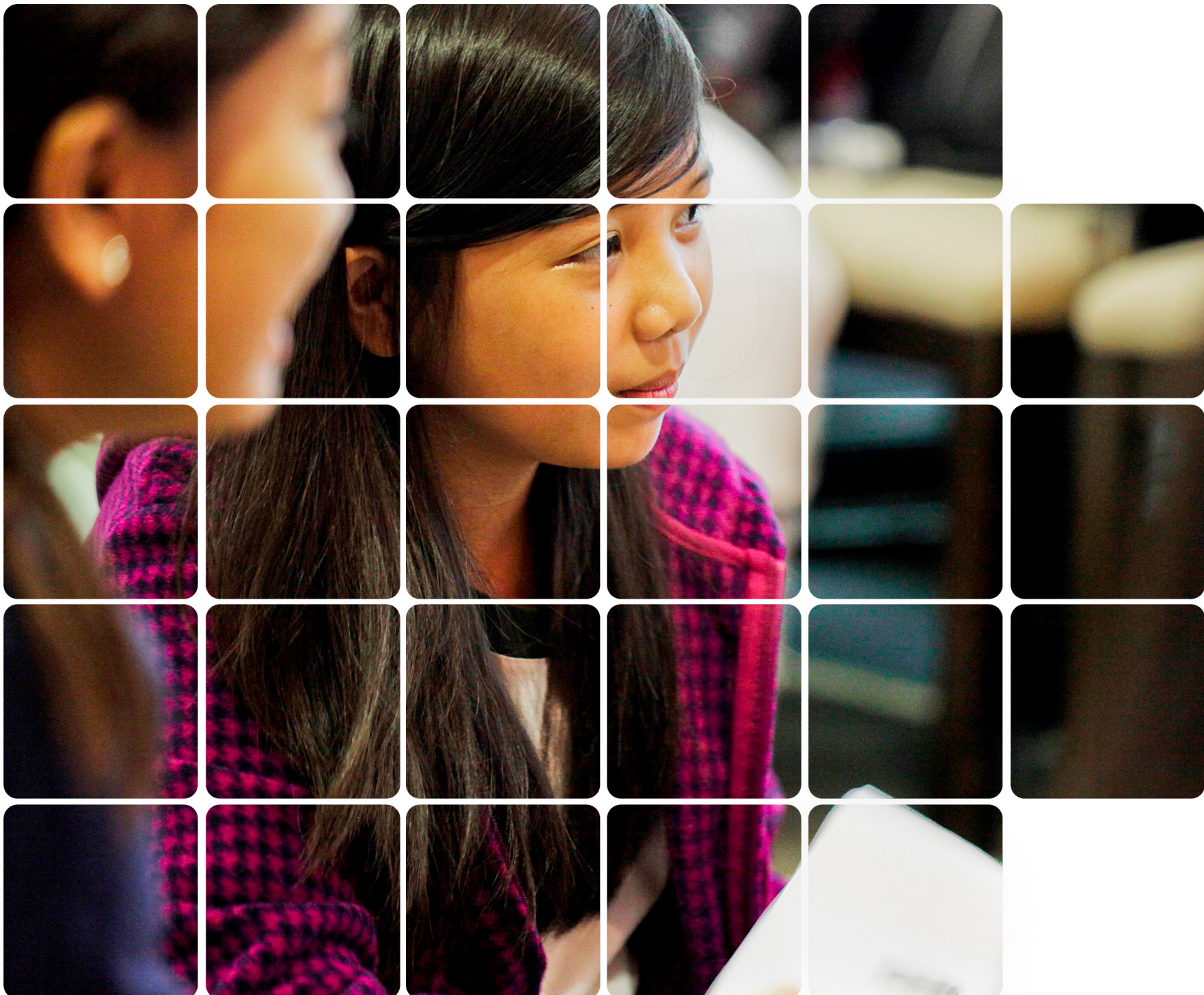
- Enables communities and people to improve the quality of life without compromising that of future generations
- Sees the interconnectedness of all life
- Adopts a system-thinking approach
- Recognizes the finiteness of resources



responsible ENTREPRENEURS

- Identifies and leverages socially-relevant opportunities by setting up business enterprises and pursuing advocacies that utilize technology-based solutions to improve the quality of life including the economic well-being and spiritual welfare of individuals and society





interdisciplinary **KNOWLEDGE WORKERS**

- Acquires and generates knowledge and understanding of fields of study beyond a single discipline

Programs Offered

Pre-school

Nursery
Kinder

Elementary

Grade 1
Grade 2
Grade 3
Grade 4
Grade 5
Grade 6

Secondary

Grade 7
Grade 8
Grade 9
Grade 10
Grade 11
Grade 12*

* offered by 2017

Research Thrust

Guided by the vision of the University, the Integrated School Research and Development Office advances the conduct of Science and Technology Research at the primary and secondary level of education. This is primarily done thru the integration of S&T research in the curriculum of grades 1 to 11.

The instructional approaches are holistic and adaptive designed to enhance the knowledge, skills, attitudes and values of students and faculty members in the conduct of multidisciplinary researches on natural and social sciences.

international FLAVOR

The DLSU Integrated School **exposes** its students to **different cultures** with various international relations with academic partners. The school currently **engages** in a **Student Exchange Program** with Tokyo Tech High School of Science and Technology, wherein five students are chosen every year to host an exchange student from Tokyo and in turn, they will visit Japan for one week.



Aside from the exchange program, the Integrated School will spearhead the annual Lasallian International Village for Earth (LIVE) wherein student representatives 10-12 years old from all over the Lasallian East Asia District learn different cultures and discuss environment-friendly socio-economic programs for nearby communities.

Admission REQUIREMENTS

1 Accomplished Integrated School Application Form

2 NSO authenticated birth certificate

- Nursery applicants must be at least 4 years old by June 1 of the upcoming academic year
- Kinder applicants must be at least 4.8 years old by June 1 of the upcoming academic year

3 Photocopy of Baptismal Certificate

4 Photocopy of Report Cards for the past and current grade/year level

- Applicant must have a general average of at least 85 with no grade below 80 in any subject and in Conduct/Department

5 Two recommendation forms accomplished by the Class Adviser, Principal or Guidance Counselor

6 Guidance Certificate of Transfer Form accomplished by the Guidance Counselor

7 Three (3) copies of 2x2" photo

8 Testing fee of P500.00

Additional requirements for foreign students

- Alien Certificate of Registration (ACR) or Special Study Permit (SSP)
- Photocopy of Passport

Only applications with correct and complete information/requirements accomplished in the prescribed forms will be processed.

Entrance examination results are available through the Admissions Office.





Envision a brighter
future for your child at the
**De La Salle University
Integrated School.**

**Be part of creating the
next great idea.**

Contact the Admissions Office for more information.

DLSU Integrated School Admissions Office
DLSU Science and Technology Complex
Laguna Boulevard, LTI Spine Road, Barangays Biñan and Malamig, Biñan City, Laguna
Tel. No. (049) 554-8900 (Laguna Line), (0916) 753-5635