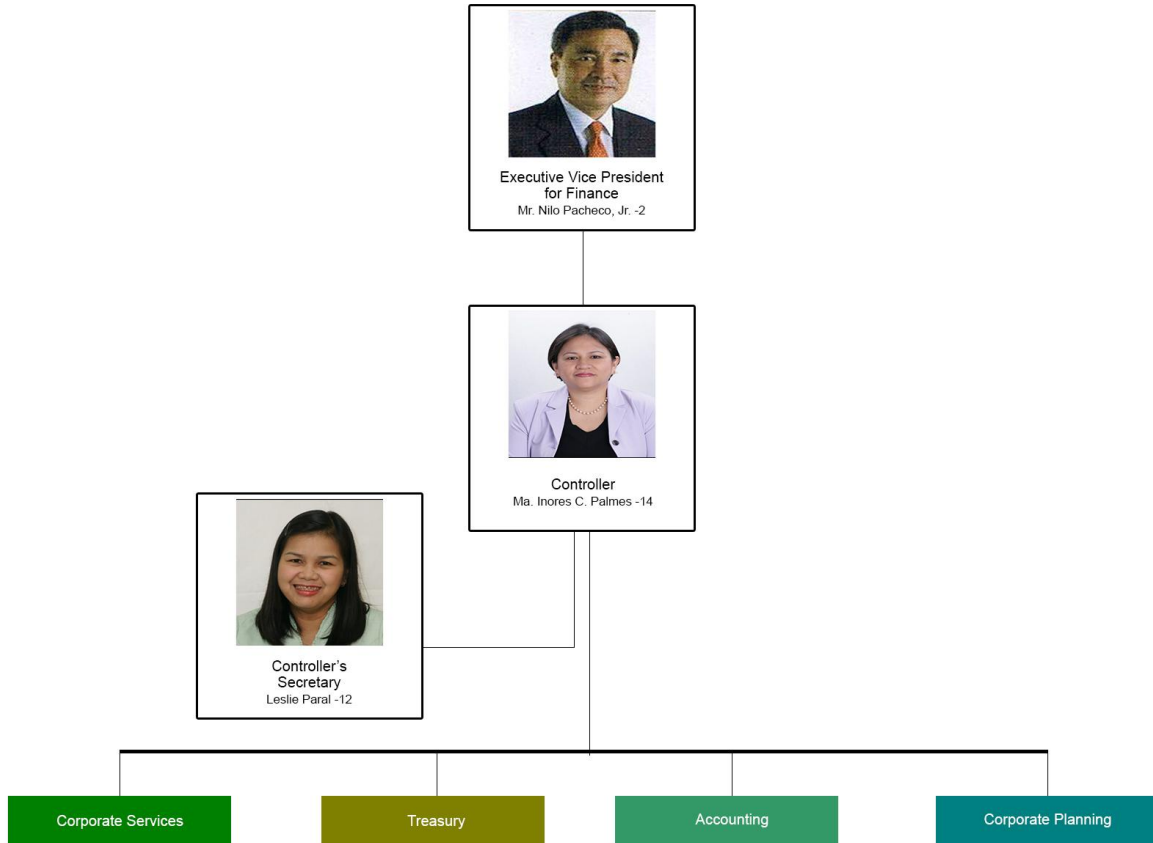
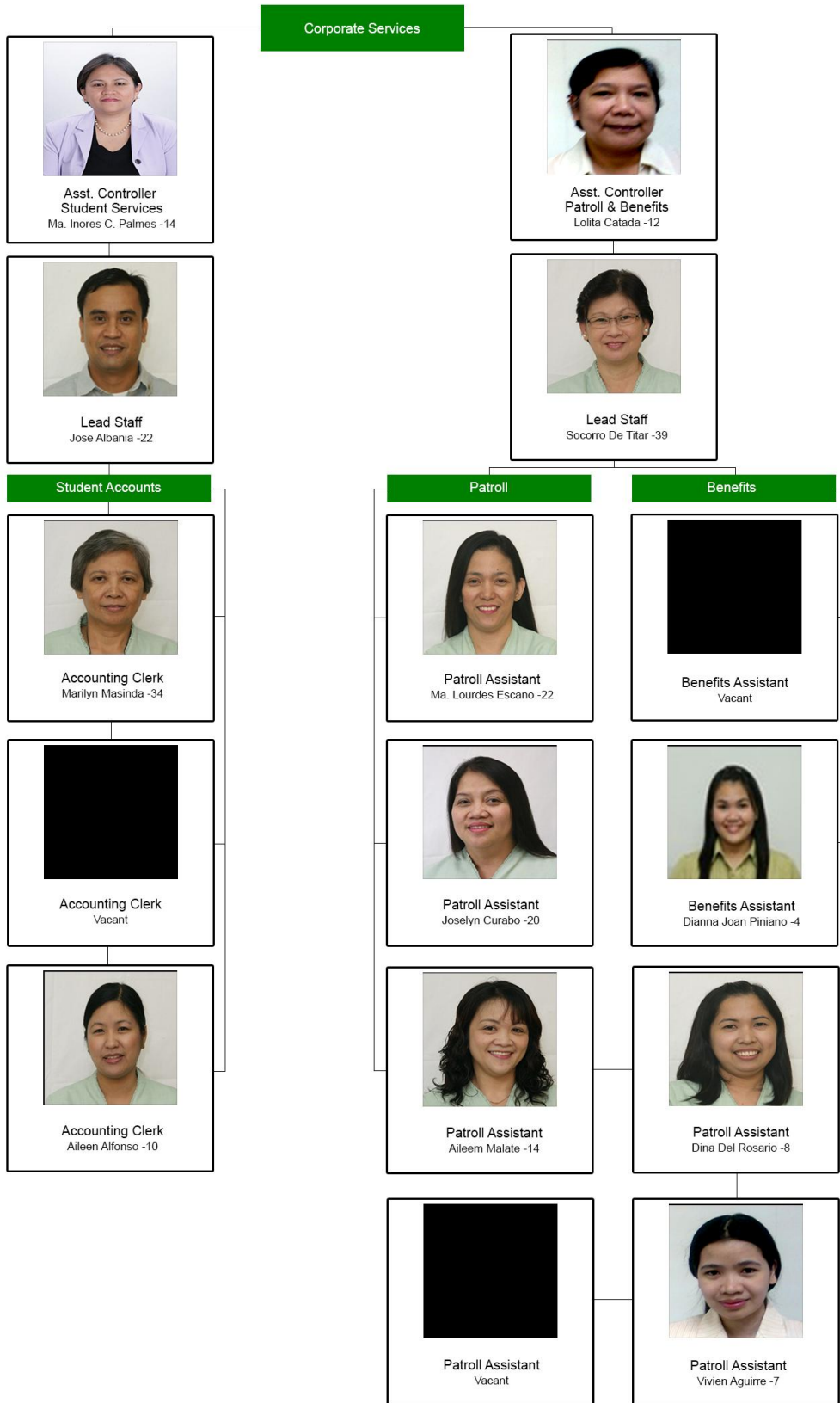




DE LA SALLE UNIVERSITY
Office of the Executive Vice President for Finance
Treasury and Controllership

TABLE OF ORGANIZATION, AY 2013-2014





Treasury



Asst. Controller
Disbursement
Lolita Catada -12



Chief Cashier for DLSU & Affiliates
Head, Records Management Section
Alfredo A. Gatmaitan -39



Asst. Controller
Investment
Josefina Luisa Torres



Lead Staff
Novera Navarosa -21



Investment Accountant
Rommel Parel -9

Payables



Payable Assistant
Marinic Cruz -14



Payable Assistant
Evangelina De Lima -31



Payable Assistant
Lolita Piccio -14



Payable Assistant
Reynaldo Dionisio -13

Disbursements



Disbursing Officer
Ma. Lily Mendiola -20



Vacant



Payable Assistant
Rosemarie Moreno -10

Cashiering



Asst. Cashier
Teresita Sapurna -34



Asst. Cashier
Maria Victoria Tuano -15



Alternate Cashier
Juana Besona -21



Roving Cashier
Josephine Gutierrez -5



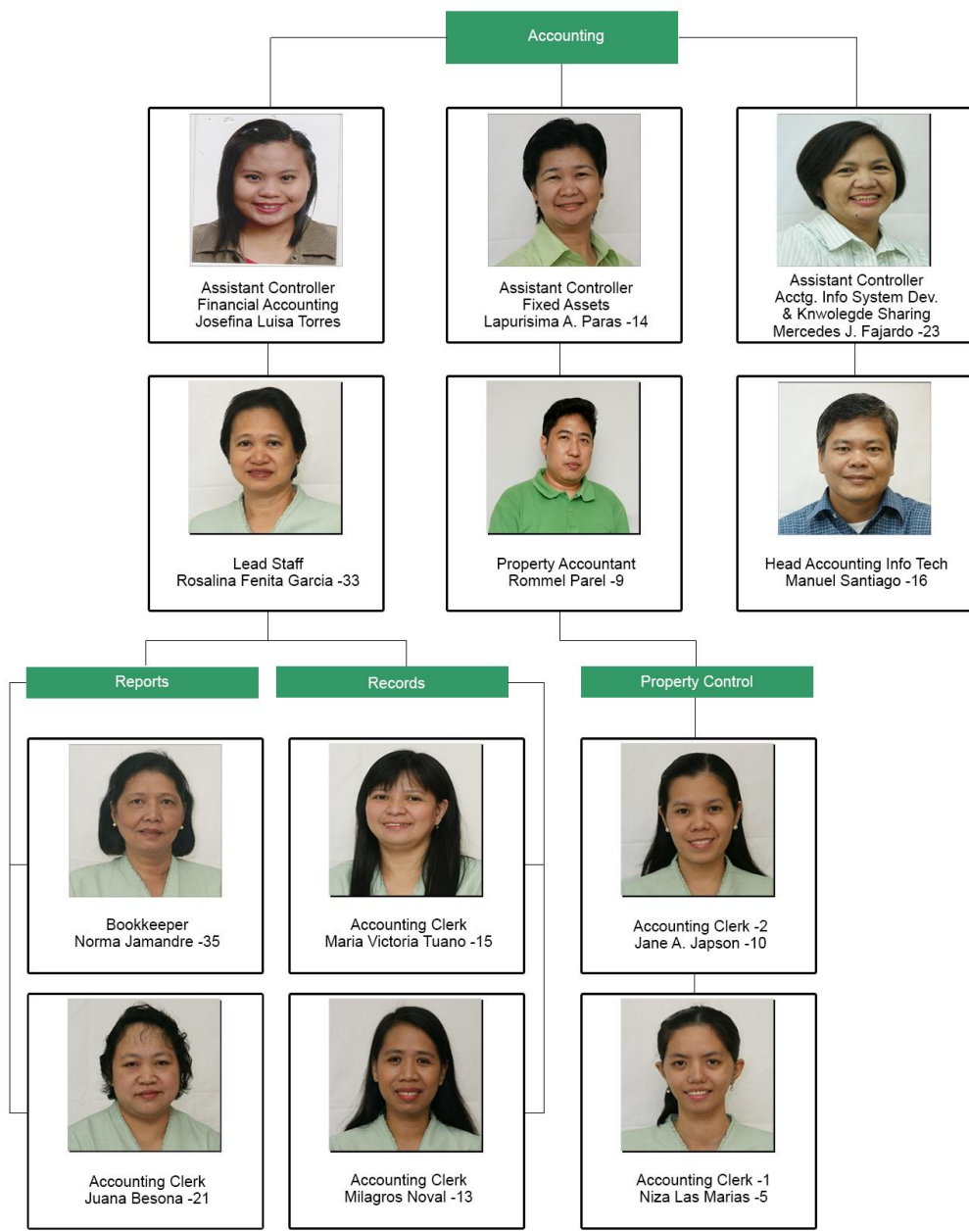
Central File Incharge
Elizabeth Leynes -2



Asst. Cashier
Renato Umlas -2



Asst. Cashier - MEC
Redante Tengco -34



Accounting



Assistant Controller
Financial Accounting
Josefina Luisa Torres



Assistant Controller
Fixed Assets
Lapurisima A. Paras -14



Assistant Controller
Acctg. Info System Dev.
& Knowledge Sharing
Mercedes J. Fajardo -23



Lead Staff
Rosalina Fenita Garcia -33



Property Accountant
Rommel Parel -9



Head Accounting Info Tech
Manuel Santiago -16

Reports

Records

Property Control



Bookkeeper
Norma Jamandre -35



Accounting Clerk
Maria Victoria Tuano -15



Accounting Clerk -2
Jane A. Japson -10



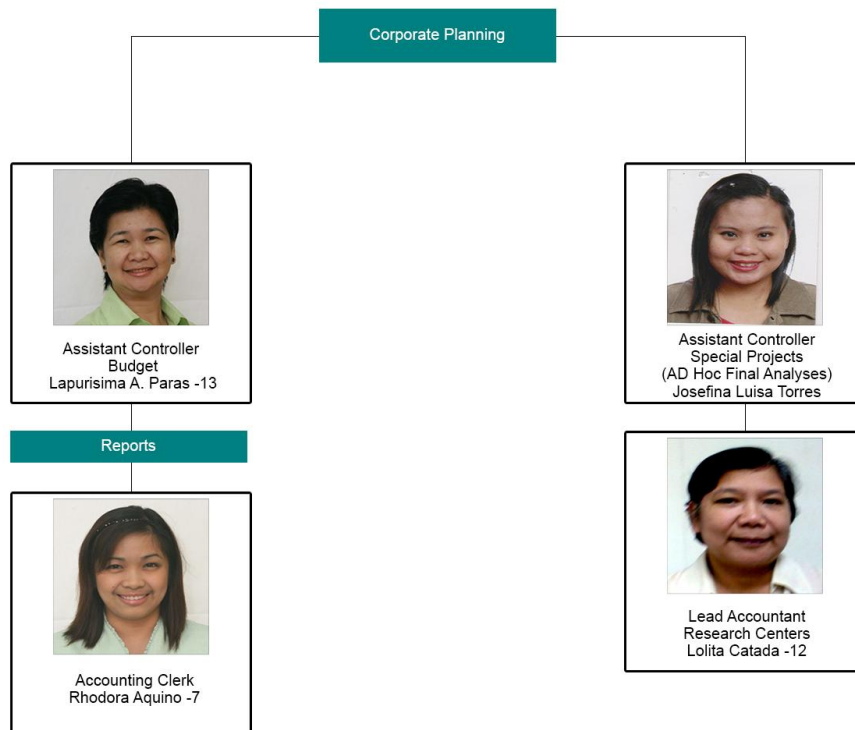
Accounting Clerk
Juana Besona -21



Accounting Clerk
Milagros Noval -13



Accounting Clerk -1
Niza Las Marias -5



CORE STAFF	LOCAL	E-MAIL ADDRESS
EVP for Finance Nilo L. Pacheco, Jr.	227	nilo.pacheco@dlsu.edu.ph
Controller Ma. Inores C. Palmes	227/175	palmesm@dlsu.edu.ph
Corporate Services Ma. Inores C. Palmes Lolita Catada	196 267	palmesm@dlsu.edu.ph catadal@dlsu.edu.ph
Tresury Lolita Catada Alfredo Gatmaitan Ma. Inores C. Palmes	267 119 175	catadal@dlsu.edu.ph gatmaitana@dlsu.edu.ph palmesm@dlsu.edu.ph
Accounting Ma. Inores C. Palmes Lapurisima Paras Mercedes June Fajardo	175 358 268	palmesm@dlsu.edu.ph parasi@dlsu.edu.ph fajardom@dlsu.edu.ph
Corporate Planning Ma. Inores C. Palmes Lapurisima Paras	175 358	palmesm@dlsu.edu.ph parasi@dlsu.edu.ph
Secretary Leslie	227	parall@dlsu.edu.ph
Front Desk Staff Dhang	348	aquinor@dlsu.edu.ph

At Your Service

1. Years of full-time service in DLSU, that is one year or more, is indicated after the staff's name. Pertinently, the average years of service to the DLSU Academic Community by long-time Accounting Staff is 18 years. Moreover, the Accounting Office is a team of Accounting Degree holders, including 6 Certified Public Accountants, and 5 Masteral Degree holders or candidates.
2. The Accounting Office services the entire University, including Students, Faculty, Academic Services Faculty, Administrators Administrative Services Personnel, Co-Acadmic Personnel, as well as personnel from other Lasallian schools. Apart from the day-to-day service requests that directly reach the Core Staff (i.e., the Controller Assistant Controllers, Chief Cashier, and Section Heads), the Accounting Office through its five transaction windows services an approximate minimum of 420 people on the lightest days, and an approximate minimum of 3,200 people on peak days.