

DUTERTISMO:

AS SEEN FROM THE LENS OF SENIOR HIGH SCHOOL STUDENTS

JORIZ LOWEL C. BAJE & JOHN CARLO ENOJADA - ZNNHS STUDENT RESEARCHER



President Rodrigo Duterte and his administration in 2019 have progressed from “very good” to “excellent.”

It is said to be unusual especially midway in a presidential term. It has been agreed that the reason of the President’s ratings are two factors — first, a confluence of many minor accomplishments, This study aims to probe the point of view of Senior High School students exclusive in Zamboanga Del Norte National High School, Turno Campus on the present presidency of Rodrigo Roa Duterte. With the use of Social Judgement Theory, the study evaluates the opinion or idea of the respondent based on with the current message of the president. Specifically, a listener judges how much the message agrees or disagrees with his or her own attitude. On the gathering of data, ten (10) respondents were chosen in accordance with the phenomenological research design, with the given characterization set by the researchers. The chosen respondents were given an informed consent form for their approval and started the researchers started the interview of the chosen respondents in gathering data. Thematic analysis was employed to systematize the data gathered (Marshall & Rossman 2016). Results show that students describe President Duterte as a good leader, controversial, rude, misogynist and communist friendly. A comparison of Duterte with other leaders was also evaluated in this study, it shows that Duterte is unconventional, fast track, and autocratic as described by the respondents. Thus, giving the conclusion that Duterte’s leadership has different reactions from positive to negative impressions.

The unexpected election of Rodrigo “Rody” Duterte as the 16th president of the Philippines on May 9, 2016 signifies a major rupture in the liberal democratic regime

Reestablished 30 years earlier with the ouster of the dictatorship of Ferdinand E. Marcos (Teehankee, 2016). In the last election he garnered 16,601,997 votes, over 6.6 million more than his closest rival, administration candidate Mar Roxas, according to the official tally by a joint congressional canvassing committee. Which is equivalent to 38.5% of the Filipino voters. An article by Isaac & Acheron, 2016 suggested that there is a significant rise of foreign investments since Duterte’s presidency, however numerous issues have been raised since he became the president such as using heavy-handed tactics and extrajudicial killings to fight criminality, especially narcotics and drug trafficking. A few examples of Duterte’s using heavy-handed tactics are the cases of Kian delos Santos, Carl Arnaiz and Reynaldo de Guzman which cases were associated to the “Oplan Tokhang” campaign of the administration.

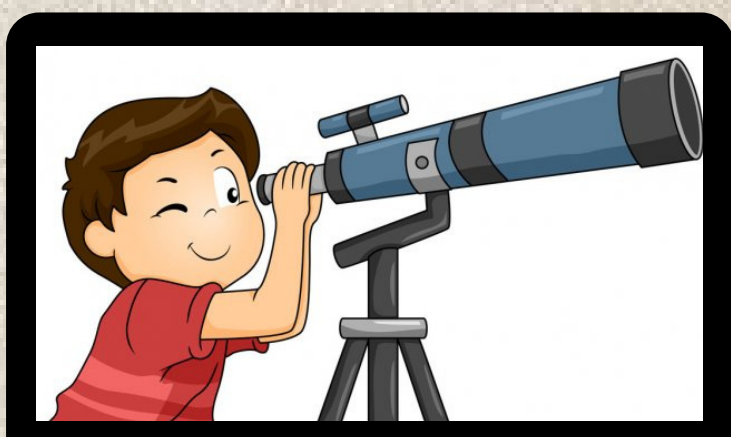


Phenomenological Research Design

Ten (10) ZNNHS SHS Students

Semi-structured interview

Thematic Analysis



The study hereby concludes that students compare and contrast Duterte with other leaders differently. From his attitude towards following the norms, his projects and achievements and foreign relations it has been given focus of the respondents and their comparison varies.

1 Description of SHS students

Good Leader, Controversial, Rude, Misogynist, Communist Friendly

2 Comparison to other leaders

Unique, Superior, Marcos-like