

INTERIOR GUARD DUTY

I. Introduction

A. Purpose and Scope

This manual is a guide for all personnel concerned with the organization and functions of an interior guard. It covers orders and countersigns, composition and responsibilities of the main guard including duties of personnel, and methods of mounting the guard. The manual also discusses the duties and composition of special guards.

B. Composition of Interior Guard

1. An interior guard is detailed by commanders of all military installations to preserve order, protect property, and enforce military regulations. The installation commander is responsible for the interior guards of their own areas.

2. The elements of an interior guard are classified according to their purposes. They include the main guard and special guards (park, train, boat and other guards detailed for specific purposes). Generally, the interior guard consists of a system of patrols and fixed posts.

C. Definition of Terms

1. **Challenge** - the command "HALT! WHO IS THERE?" is used to cause an unidentified party or person to halt and be identified. If a secret challenge is used, it follows the original challenge and consists of a word or distinctive sound.

2. **Password** - a word or distinctive sound used to answer a challenge identifies the person or party desiring to enter or pass and is always secret.

3. **Countersign** - a countersign consists of a secret challenge and a password. The words comprising the countersign are issued from the principal headquarters of a command to aid guards and sentinels in their scrutiny of persons who apply to pass the lines.

4. **Commanding Officer** - the officer commanding an installation, garrison, or bivouac.

5. **Officer of the Day** - an officer acting directly under the commanding officer who is responsible on a given day for the execution of all orders of commanding officer relating to interior guard duty and other duties as may be assigned.

6. **Commander of the Guard** - the senior officer or noncommissioned officer who is responsible for the instruction, discipline, and performance of the duty of the guard. He is the member of the guard next junior to the officer of the day.

7. **Company** - includes battery, or any other similarly organized unit.

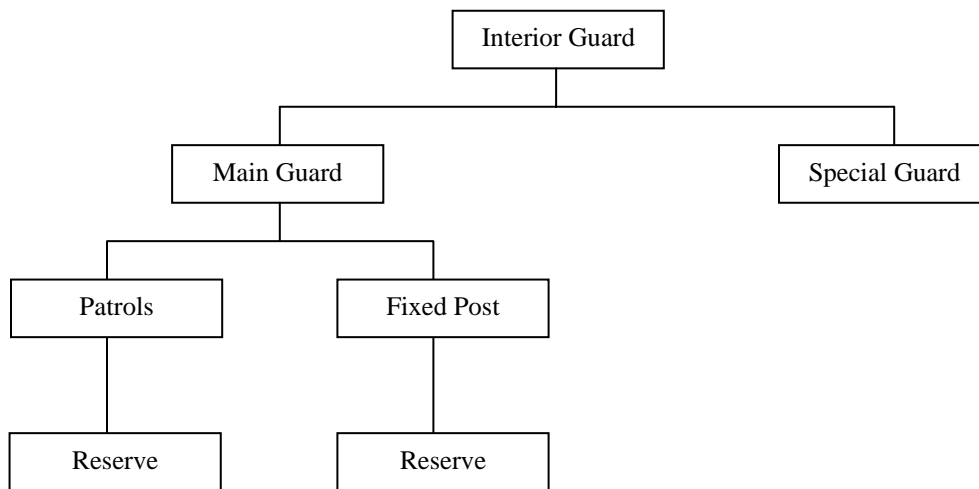
8. **Guardhouse** - a building occupied by men detailed for interior guard duty. It might include guard tent or any other designated location for the headquarters to guard.

9. **Fixed Post** - a specific post with well defined limits.

10. **Sentinel's Post** - an area for which the sentinel is responsible. Within his post, a sentinel performs the duties required by general and special orders.

11. **Confinement Officer** - a military police officer assigned to a stockade and charged with the security, administration, treatment, care and custody of all prisoners confined in the local stockade or hospital prison ward.

12. **Stockade** - a confinement facility under the jurisdiction of an installation commander, used for the confinement of military prisoners.



General breakdown of interior guard

D. Eleven General Orders

1. To take charge of this post and all government property in view.
2. To walk my post in a military manner, keeping always on the alert and observing everything that takes place within sight or hearing.
3. To report all violations of orders I am instructed to enforce.
4. To repeat all calls from post more distant from the guardhouse than my own.
5. To quit my post only when properly relieved.
6. To receive, obey, and pass on to the sentinel who relieves me all orders from the Commanding Officer, officer of the day, and officers and noncommissioned officers of the guard only.
7. To talk to no one except in the line of duty.
8. To give the alarm in case of fire or disorder.
9. To call the commander of the relief on any case not covered by instructions.
10. To salute all officers, and all colors and standards not cased.
11. To be especially watchful at night and furring the time for challenging to challenge all persons on or near my post and to allow no one to pass without proper authority.